



# Guide

## to student accommodation

Université Fédérale Toulouse Midi-Pyrénées



Université  
Fédérale  
Toulouse  
Midi-Pyrénées

[welcomedesk.univ-toulouse.fr](http://welcomedesk.univ-toulouse.fr)

2018-2019



# HIGHER EDUCATION

The Occitanie  
Region  
commits to



## RECONCILING EXCELLENCE AND DEMOCRATISATION OF ACCESS FOR STUDENTS TO HIGHER EDUCATION

The Occitanie region has adopted a new regional scheme for higher education, research and innovation which will mobilise €110M to enable, among other things, the democratisation of access for young people to higher education, the dissemination of innovation and scientific culture to companies and the promotion of technology transfer between research institutions.

The region promotes a site policy, by reinforcing the university centres in the metropolitan areas of Toulouse and Montpellier and by strengthening the development of university cities with balanced territorial, economic and social cohesion.



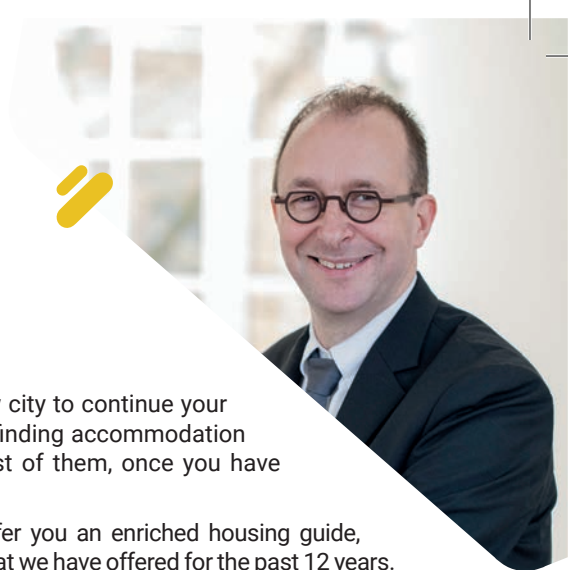
@occitanie | [laregion.fr](http://laregion.fr)



La Région  
**Occitanie**  
Pyrénées - Méditerranée



# EDITORIAL



The entry into student life, or moving to a new city to continue your studies, requires a series of important steps: finding accommodation adapted to your expectations is often the first of them, once you have chosen your establishment.

To simplify this often complex process, we offer you an enriched housing guide, which supplements the general Student Guide that we have offered for the past 12 years.

You will find the main public sector residences, mostly supported by the Occitanie Regional council: the CROUS complexes and residences, student residences run by social housing organisations - "HLM" - and habitat jeune residences offered by the Regional Union for Youth Habitat (URHAJ Occitanie).

You will also find advice for each step (finding lodgings, moving in, departure) and a series of useful contacts for sharing, intergenerational accommodation, furnishings, etc.

For more advice and personalised answers to your questions, we are also at the Welcome Desk, 41 allées Jules Guesde, with our key partners and in particular the Welfare and Benefits Office (CAF) of the Haute-Garonne.

If you can't come to us, log on to the [welcomedesk.univtoulouse.fr](https://welcomedesk.univtoulouse.fr) website: you will find all kinds of useful information.

Happy flat hunting and have a great time studying in Toulouse!

**Philippe Raimbault,**  
President of the Université Fédérale Toulouse Midi-Pyrénées (UFTMP)

**Publication Director:** Philippe Raimbault / Communications

**Editing:** Sara Poix, Rébecca Pustoc'h, Laetitia Galindo-Marlese, Rachel Abovici

**Cover graphics:** Agence Icom

Please note that some information contained in this guide is liable to change over the year. For more information, go to: [welcomedesk.univ-toulouse.fr](https://welcomedesk.univ-toulouse.fr)





# Students

## Welcome Desk

A single place to get information and help with:



**CAF/CROUS/PRÉFECTURE/RECTORAT/TISSÉO (E-AGENCY) / SNCF**

This advice and service space is dedicated to students and brings together the missions of the UFTMP, the Centre for higher education guidance and information - CIO du Sup, the CAF and the prefecture (foreign student office), which have all transferred their student reception to the space, as well as an office of the Crous.



Université  
Fédérale  
Toulouse  
Midi-Pyrénées

[welcomedesk@univ-toulouse.fr](mailto:welcomedesk@univ-toulouse.fr)

**Open all year**  
from Monday to Friday non-stop  
(except public holidays  
and Christmas holidays)  
9 am to 5 pm



# CONTENTS

<b>.MAP</b> .....	<b>6</b>
<b>.01 STUDENT ACCOMMODATION</b> .....	<b>9</b>
• FINDING ACCOMMODATION .....	10
• TYPES OF ACCOMMODATION .....	11
• ONCE YOU HAVE FOUND YOUR ACCOMMODATION .....	12
• SHARED ACCOMMODATION .....	14
• WORK-STUDY/APPRENTICES .....	14
• LEAVING YOUR ACCOMMODATION .....	15
• THE STUDENT BUDGET .....	16
• WHAT HELP IS AVAILABLE? .....	18
<b>.02 LIVING IN TOULOUSE</b> .....	<b>21</b>
• FURNISHING: THINK RECYCLING! .....	56
• BE INFORMED, ADVISED, GUIDED: THE ADDRESS BOOK FOR STUDENT ACCOMMODATION .....	57
<b>.03 ACCOMMODATION IN THE OTHER TOWNS OF THE UFTMP</b> .....	<b>59</b>
• ALBI .....	60
• AUCH .....	64
• CAHORS .....	65
• CASTRES .....	68
• FIGEAC .....	70
• FOIX .....	72
• MILLAU .....	73
• MONTAUBAN .....	74
• RODEZ .....	75
• TARBES .....	78
• PRACTICAL INFORMATION AND INTERNET ADDRESS BOOK .....	82

 secure access	 laundry	 work room	 chill-out room	 breakfast
 photo room	 administrator	 resto'U	 common room	 games room
 parking	 infirmary	 cafeteria	 restaurant/ communal kitchen	 crockery
 locked storage	 inter phone	 gym	 pool table	 common room
 night porter	 2-Wheeler	 courtyard	 linen	 meeting room
 wifi/Internet	 study room	 library reading room	 mattress bedding	 social/Individual support
 bicycle storage	 multimedia	 snacks	 terrace	 table football
 cultural activities	 vending machine	 TV room	 bar	 dining room
 various activities	 garden			

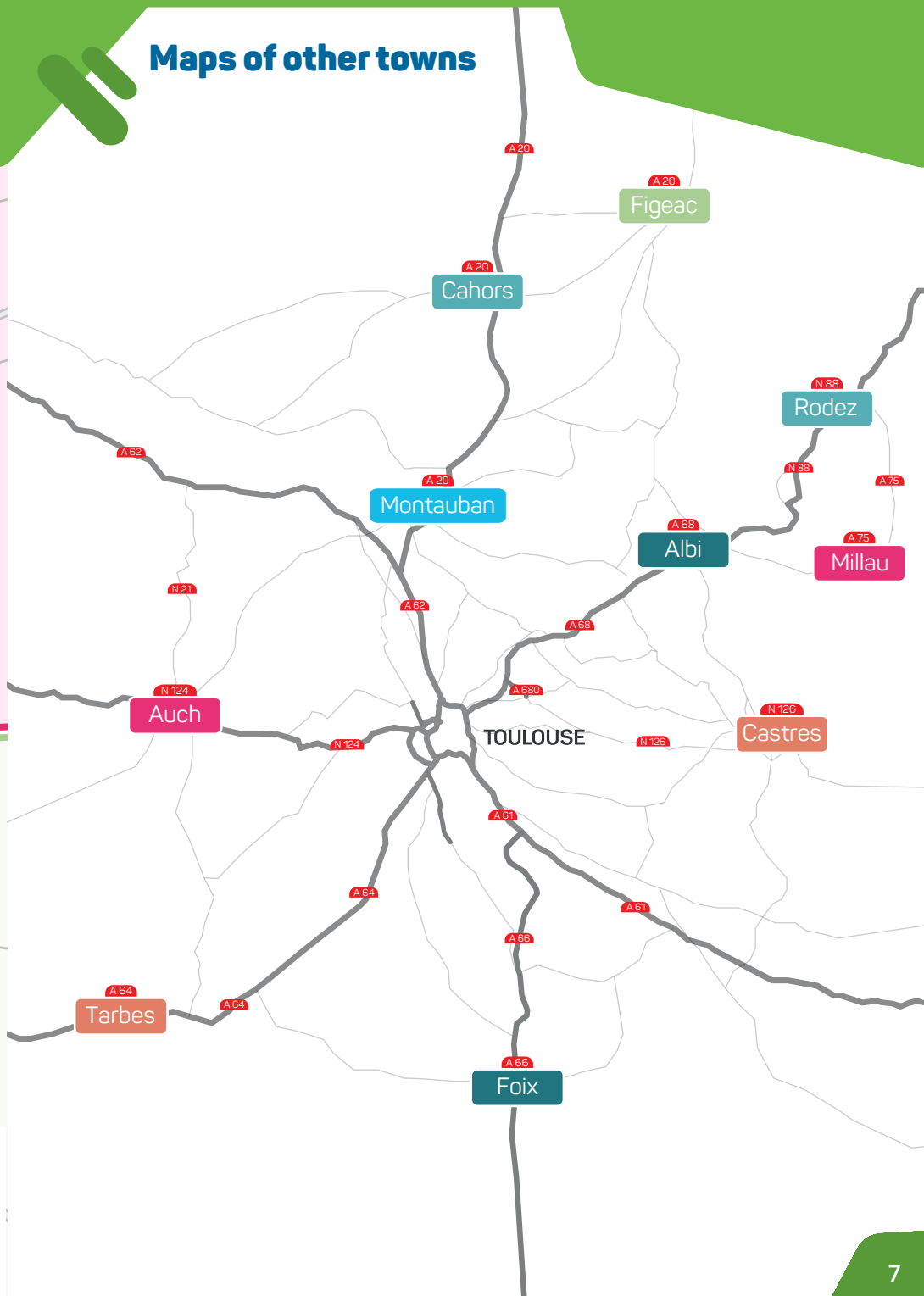


# Map of Toulouse





## Maps of other towns





**Crous**

Toulouse  
Occitanie

Every day,  
the Crous supports you  
in your student life!



## GRANTS

Grants based on social criteria and financial aid  
to support your studies.

41,632\* students with grants in the regional education authority.



## ACCOMMODATION

Accommodation in student halls and with individuals  
certified on the Lokaviz.fr site.

10,337\* spaces in university halls.



## CATERING

Full meals for €3.25\*, takeaway meals to eat well  
for less on campus.

2,597,741\* meals served and 43\* catering points.



## CULTURE

Events, a theatre (Mac), workshops, support and competitions  
to encourage all talent.

4,000\* students come to the Mac for cultural activities.



## SOCIAL ACTION

Support, advice and a listening ear to help you in the event of  
personal difficulties.

14,211\* students helped by social workers.



## STUDENT JOBS

Jobs in restaurants, residences, departments  
and with partners.

253\* students recruited in the Crous service units.

\* 2017 figures

Find all Crous services  
at Case 58 rue du Taur, Toulouse,  
+33 (0) 806 800 131 (price of a local call)  
and [www.crous-toulouse.fr](http://www.crous-toulouse.fr)





# .01

## ACCOMMODATION WHEN YOU ARE A STUDENT





## Looking for accommodation: don't leave it until the last minute!

### APPLICATION FORM

**Get all the papers together to create your rental dossier:**

After the results of your baccalaureate/A Levels and when it is time to go to University, you won't be the only one searching for accommodation, so improve your chances by going on visits with your completed application form to save time!

**The list of documents you will most often be asked to produce:**

- ✓ the photocopy of your ID card, passport and residence permit,
- ✓ your student ID card or certificate of enrolment,
- ✓ proof of address, less than three months old if you already have an address, your RIB - bank details.

**The list of documents your guarantor must provide (or certification of eligibility if your guarantor is an organisation, see table page 18-19):**

- ✓ their last three pay slips and an attestation from their employer, proof of address less than
- ✓ three months old if you already have an address,
- ✓ their ID, their latest tax statement.

### BUDGET

**Determine your budget for the 1<sup>st</sup> month and the rest of the year:**

It is important to know your budget in advance and the costs you will have each month in order to choose accommodation that will be within your means. Prepare a sum of money to cover your initial living costs when you first arrive and have enough to pay for any other obligatory costs during your installation in your new accommodation.

**In the 1<sup>st</sup> month you must pay:** the 1<sup>st</sup> month's rent + the security deposit + agency fees/dossier fees + furniture if needed.

**The rest of the year:** any bills for gas/electricity and Internet which are not included in the rental agreement (generally all these costs are already included in your rent if you are in a student residence); don't forget to take into account the other costs which are not related to your accommodation: studies, transport, shopping, as well as your leisure activities, etc. (see the budget table on page 18-19)

If you have accommodation on the 1<sup>st</sup> January you must pay the **taxe d'habitation** (council tax) for this accommodation (usually in November). If you have made your own income tax declaration, the tax authorities will automatically calculate any reductions in taxes that you might be able to benefit from (reductions and thresholds are based on your income). If you are still part of your parents' tax household, you can ask for tax reductions by contacting your local tax office and by sending them a copy of your parents' tax statement.

You will not have any tax to pay if you live in a university hall administered by the Crous, in a student residence, or if you occupy a furnished room in a private home.

**Please note, when you receive this council tax, check if they ask you to pay the TV licence (the contribution for public television). If you don't have a television, you don't have to pay this.**

You can contact or visit the tax service at the address which is on your council tax notice.



## Various tips

- ✓ Do not underestimate the time it will take to get from your home to where you study.
- ✓ Never pay in cash and don't hand over any money for rent or security deposit before signing the lease.
- ✓ Do not go through "list brokers" who offer you a list of houses in exchange for money, but without any guarantee of finding accommodation.
- ✓ Don't wait until the day before you start to find a place to live.
- ✓ At the beginning of the university year, the housing offers are more scarce and your research will become a true obstacle course.
- ✓ It is better to reserve accommodation and pay rent for a few extra weeks even if you are not living in it... The best time to find accommodation is between the exam results and mid-August at the latest.

### Warning!

A room of less than 9m<sup>2</sup> is not considered as an accommodation and you cannot get housing benefits!

## Types of accommodation

### PRIVATE ACCOMMODATION

It is open to all students. The accommodation belongs to a private individual and the rental agreement is made directly with the owner or via a property management agency. The accommodation can be rented either furnished or unfurnished. Consult page 54 of the guide.

### ACCOMMODATION IN A CROUS

These are primarily for students who receive a French government grant (BGF), as well as international students registered for a Masters 2 or Doctorate. If you wish to have a place in a Crous residence, you will need to apply very early. Applications are between mid-January and the end of May, but don't wait until the end!

[www.messervices.etudiant.gouv.fr](http://www.messervices.etudiant.gouv.fr)

International students must contact the international relations service of their establishment.

**Find the Crous residences in this guide!**

### A ROOM IN A PRIVATE HOME

This is open to all students. You have a bedroom in a private home and share with the owner (and family) the kitchen and bathroom. Some share other living spaces, others not. Just as some offer packages with breakfast and the evening meal, others do not. The rental agreement must list any services. Consult page 55 of the guide.

### SOCIAL HOUSING

Social housing, also called HLM, is accommodation run by social housing organisations (such as Promologis, le Groupe des Chalets, Colomiers Habitat, S-A Patrimoine, Toulouse Métropole Habitat, etc.). Social housing can be a room, a studio, a two-room flat, etc., either in a residence or not. Send your application directly to the residence (quicker) or apply via:

[www.demandelogement31.fr](http://www.demandelogement31.fr)



### URHAJ RESIDENCES

The Habitat Jeunes residences of the Union Régionale pour l'Habitat des Jeunes (URHAJ) welcome young people aged 16 to 30 who are employees, apprentices, students, trainees or unemployed people receiving benefits. Several types of furnished accommodation are offered (bedroom, studio, 1-bedroom flat, etc.) and it is possible to live alone or to share. In the Habitat Jeunes residences, support, workshops or other activities are proposed to the residents.

[www.habitatjeunesoccitanie.org](http://www.habitatjeunesoccitanie.org)

### SHARING

Consult pages 14 and 55 of the guide.

### LA KAPS


La Kolocation à Projet Solidaire by the AFEV. Consult page 55 of the guide.

### INTERGENERATIONAL SHARING

Consult page 54 of the guide.

### TEMPORARY ACCOMMODATION

Consult page 55 of the guide.

 **If you are without a temporary emergency accommodation solution and if you do not find help around you or from the social services, call 115 to make sure you don't sleep in the street.**

## Once you have found your accommodation

Before you can unpack your bags and move into your accommodation, there are still a few more steps to complete.

### HOME INSURANCE

Once you have found your accommodation and before you meet the landlord (owner) to collect the keys, you should take out a home insurance policy. This is **obligatory** and will protect you from a variety of risks. It can be obtained with a mutual insurance company, a bank or a private insurance company. If you are sharing, each person must take out home insurance.

**Advice: choose an insurance policy which is multi-risk and includes third-party responsibility.**

### THE GUARANTOR

The guarantor agrees to pay the rent and the bills if the person renting the accommodation is unable to do so. The guarantor should be solvent, that is to say they can prove that they dispose of sufficient income and are capable of meeting this cost and this responsibility. It is required by the majority of owners and agencies. If there is no one who can be the guarantor for you, you can request the aid of Visale (see table page 18).



If you do not meet their criteria to benefit from their guarantee services, you can get information from a bank or talk directly with the landlord to see if you can pay several months in advance.

### THE SECURITY DEPOSIT

You will then have to pay the “caution” (security deposit), which for unfurnished rentals is normally one month’s rent before any charges for bills and two months’ rent for a furnished rental. This will be returned to you when you leave, minus the cost of any damage to the accommodation. These mechanisms can help you pay your security deposit: the **LOCA-PASS advance** and **Instal’Toit** (see table page 19).

### INVENTORY

The day you get the keys, you will complete an inventory - état des lieux - of the accommodation. This is a complete description of the accommodation, written in 2 copies in a very precise and predetermined format.

**It is very important to note and even describe any and all visible damage, even slight, and to keep your copy safe until the day that you leave the accommodation.** If on the day you leave the accommodation, the inventory is as it was on the day you arrived, the security deposit will be returned to you within a maximum of one month. If the inventory is not the same, the maximum time period is two months (see page 15). You can now sign two copies of your rental agreement (also called a bail) and collect the keys for your new place!

**Tip: ask the landlord to provide you each month with quittances de loyer - rent receipts: these prove that you have paid and could be useful to you in some administrative processes. It’s not over yet! There is still a bit more to do...**

### THE CAF



#### Housing benefits from the Caisse d’Allocations Familiales.

When you rent your accommodation, whether you are a French or foreign student, you can request housing benefits from the CAF. You will receive your payment monthly (see table page 19).

### SETTING UP SERVICES

As soon as you have moved into your new accommodation, you will need to set up an account for services such as electricity and/or gas, Internet, etc. Generally, if you are living in a university/student residence or renting a furnished room in a private home, these costs are fixed and included in your rent.

**Tip: at the time of the inventory, ask who the suppliers were for energy and the Internet used by the previous tenant; this will make it easier for you when you take on the service contract.**

The Toulouse city hall can help you settle into your new life in Toulouse thanks to financial aid from Instal’Toit, an advance without interest of €100 to €500

(consult the table of financial aid on page 19).

Now you have caught your breath, it’s time to move in! In order to save some money when furnishing your home, there are associations, student initiatives and organisations which can help you do it on the cheap. Consult the chapter “Furnishing, think recycling!” page 56.



## The case of shared accommodation

Living in shared accommodation is the choice of living in a larger property with one or more other persons. Sharing the common spaces such as the living room, the kitchen and the bathroom, but also and above all... Sharing the rent and the bills!

It is therefore one of the cheapest accommodation solutions available, but it doesn't suit everyone: you have to want to share things every day...

There are no pre-defined rules and the methods vary from one landlord to another.

But be aware that it is important that you be included on the rental contract (lease). If you join an existing shared accommodation, an amendment to the lease should be made.

Two types of leases exist for this type of accommodation: single and individual. The single lease on which all the flatmates are named, but be careful of the solidarity clause which binds all flatmates together until the end of the contract!

This clause means that if you leave the accommodation before the end of the contract, and those who remain don't pay the rent, you remain responsible.

This clause ends 6 months after the end of your notice.

With an individual lease for each flatmate, this clause doesn't exist; however, it is the owner who chooses the other flatmates and not you.

## Work-study contracts / apprentices

Action Logement helps young people under 30, who are on a work-study contract, in their search for accommodation and in their payment of rent through the Mobili-Jeune scheme, which allows for the payment of part of the rent up to €100 per month. Make your request online 3 months before the start of your work-study contract or at the most 6 months after the start:

<https://alternant.actionlogement.fr/>

The Carte Jeune of the Occitanie regional council helps with accommodation for apprentices. This is a flat annual rate based on taxable income.

This benefit is for students with two places to live who do not receive CAF benefits for their second accommodation. This benefit is only accessible via a network of accommodation structures approved by the regional council (the request must be made between the months of June and January) on this site:

[www.laregion.fr/-Le-Site-Jeune](http://www.laregion.fr/-Le-Site-Jeune)



## Leaving your accommodation

You have finished your studies, you wish to move into shared accommodation, with a partner or to a bigger flat... In any case, moving out means respecting certain rules and not forgetting to end your contracts or to notify your change of address!

### **GIVING NOTICE**

You can terminate your rental contact at any time, on condition that you respect the notice period of one month in Toulouse (please note that this notice can be up to 3 months in some other towns)... To give notice, you must send a recorded delivery letter (lettre recommandée avec accusé de réception) to the landlord. To do this, you will need to go the Post Office and pay a fee of €4.

### **LEAVING INVENTORY**

This is completed, with the landlord, the day you leave the accommodation, in order to note any damage. The accommodation must be returned in the condition in which you found it. This état des lieux de sortie must, since June 2016, take into account normal wear and tear due to time and use of your accommodation.

### **REIMBURSEMENT OF THE SECURITY DEPOSIT**

This inventory will be compared to the original to establish if the landlord can claim costs for any repairs to the accommodation (if that is the case it should be justified by bills or estimates). Only certain costs may be claimed

(holes in the walls, lack of upkeep, etc). If the two inventories are the same, the landlord has one month to return the security deposit to you, or two months if there are differences.

### **TERMINATING SERVICE CONTRACTS**

Before leaving your accommodation or Toulouse, remember to terminate any service contracts you have taken out, such as electricity, gas, Internet, etc.

Tip: before you finally leave your accommodation and contact your service providers to terminate the contracts, remember to read the meters and note down the figures

### **CLOSING YOUR CAF ACCOUNT OR MAKING A CHANGE OF ADDRESS**

You can do this via the Internet or directly with the office in Toulouse at the Welcome desk.

You will need your numéro d'allocataire - allocation number.

### **CLOSING YOUR HOME INSURANCE POLICY**

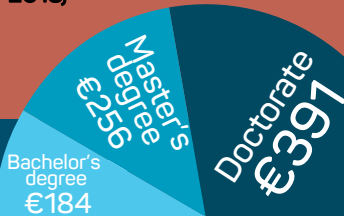
You do this by recorded delivery letter at the Post Office (€4), including a copy of your leaving inventory.



# The student budget

## TRAINING/EDUCATION

Registration fees  
(2017 - 2018)



## ACCOMMODATION

Security deposit  
(When you move into  
your accommodation)

1 month's rent  
unfurnished  
2 months' rent  
furnished



Home insurance  
(When you rent  
your accommodation)

€30 - €110 / year



Council  
tax  
(Mid-November)

€250 - €550 / year

## ELECTRICITY GAS

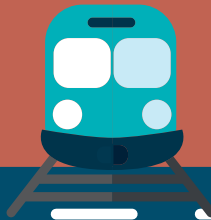
€30 - €50 / month

## TELEPHONE INTERNET

€30 - €50 / month



Bus / Metro /  
Tram  
[www.tisseo.fr](http://www.tisseo.fr)



Train  
[www.sncf.fr](http://www.sncf.fr)



## STUDENT CONTRIBUTION

(Health care, social, sport, culture).

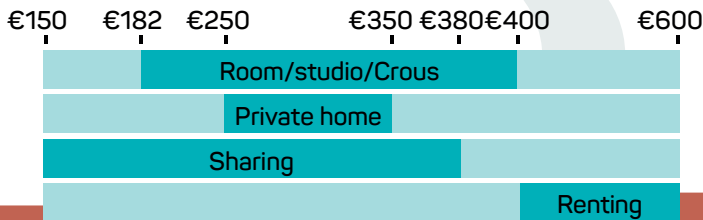
This is paid before registration

**€90**  
(with exceptions)

## TOP-UP HEALTH INSURANCE

(Private insurance, Universal Health Coverage supplement, etc.)

## ACCOMMODATION (month)



Between **€60** and **€600**

## MISCELLANEOUS EXPENSES

(Leisure, clothing, etc.)

**€200 / month**  
approx

## FOOD

(NB : €3.25 per meal at the Resto U)

**€200**  
approx.

Bicycle hire VélôToulouse  
**€20/year**



# Accommodation : La garantie Visale

La garantie Visale d'Action logement is an alternative to the parental security deposit. It is free, without proof of income, and the application is made at [www.actionlogement.fr](http://www.actionlogement.fr) (allow up to 48 hours to get a certificate).

VISALE	
Administrator	Action Logement
Who is it for?	Young people, students and those on work-study contracts, aged 18 to 30
Eligibility condition	To be registered in a higher education establishment
What type of accommodation?	For all types of accommodation (except tourist accommodation and hotels)
Do you pay?	Free for the landlord and tenant
Required paperwork	<ul style="list-style-type: none"> <li>✓ ID or passport (if you are French or a member of the EU) or titre de séjour (residence permit) or a long-stay student visa or Talent Passport</li> <li>✓ Proof of studies (student card or certificat de scolarité (certificate of enrolment) or attestation d'inscription (certificate of registration))</li> <li>✓ A work-study contract for students in work-study programmes</li> </ul>
Coverage	It covers all the period of occupation of the accommodation up to 36 months for private accommodation and 9 months for social accommodation (Crous, HLM)
Limits to the amount of the rent	<ul style="list-style-type: none"> <li>✓ For students, the guarantee is given without the need to provide proof of income up to a maximum rent of €425</li> <li>✓ Beyond that, the student will be subject to the conditions set (percentage of income between 30 and 50%)</li> </ul>
Request online and/or information	<b><a href="http://www.visale.fr/hotline">www.visale.fr/hotline</a></b> +33 (0)4 72 13 21 99 - CRIJ : 17 rue de Metz - 31000 Toulouse - Welcome Desk : 41 allées Jules Guesde 31000 Toulouse



# What financial aid is there for your accommodation?

	ACTION LOGEMENT	INSTAL'TOIT	HOUSING BENEFITS FROM THE CAF
For what?	To finance the security deposit	To cover the expenses of settling into new accommodation (rent, deposit, furnishing, etc.)	It is monthly financial aid for all French or foreign students. It is allocated at the beginning of each month for the preceding month, except the first month in the accommodation, which is not eligible for aid.
Who will help?	Action logement	Toulouse city hall	
Who is it for?	<ul style="list-style-type: none"> <li>- Non-agricultural private sector employee</li> <li>- Young people under 30 in professional training, in research or in employment</li> <li>- Students receiving grants from the French government</li> </ul>	<ul style="list-style-type: none"> <li>- Young people aged 18 - 29</li> <li>- Registered in a higher education establishment in the municipality of Toulouse</li> <li>- Those in training, apprentices, those on work-study contracts, young workers leaving Habitat Jeunes</li> <li>- Person renting accommodation in Toulouse</li> </ul>	Don't forget to tell the CAF in June if you are keeping your accommodation in July and August, otherwise the benefits will be suspended automatically. Please note that if you are under 21 and your parents receive family benefits for you, these will stop if you apply. Think about it together!
Which accommodation?	For all types of accommodation	For all types of accommodation	
What does it correspond to?	<ul style="list-style-type: none"> <li>- To the cost of the security deposit as defined in the lease within the limit of €500</li> <li>- Sharing: for the share of the security deposit of the person receiving financial aid</li> </ul>	The fixed amount of aid is €100, €200, €300, €400 or €500 depending on the advance you need. It can be combined with LOCA-PASS	<b>Documents you will need when you apply on line:</b> <ul style="list-style-type: none"> <li>✓ Your RIB - bank details</li> <li>✓ Your rental contract with the landlord's contact details, the amount of the rent and the charges</li> </ul>
Is interest charged?	None, it's a loan at 0%	None, it's a loan at 0%	
Required paperwork	<ul style="list-style-type: none"> <li>✓ ID</li> <li>✓ RIB - the tenant's bank details</li> <li>✓ RIB - the landlord's bank details</li> <li>✓ Copy of the signed lease</li> <li>✓ Certificate of enrolment</li> <li>✓ Definitive certificate for students receiving a grant</li> </ul>	<ul style="list-style-type: none"> <li>✓ Student card / certificate of enrolment</li> <li>✓ Copy of the lease (signed within the last 3 months)</li> <li>✓ RIB - bank details</li> <li>✓ Payment authorisation</li> <li>✓ Proof of income for young workers with a job contract</li> <li>✓ The downloaded loan request form</li> </ul>	<b>Required documents: For all students:</b> <ul style="list-style-type: none"> <li>✓ Rent declaration completed by the landlord</li> <li>✓ Last two years' income if you have worked in France.</li> </ul>
Type of help and transfer period	By bank transfer within a period of approx. 15 days	By bank transfer within a period of 3 to 4 weeks	<b>For European students:</b> <ul style="list-style-type: none"> <li>✓ ID</li> <li>✓ European Health Insurance Card</li> <li>✓ Certificate of enrolment</li> </ul>
Reimbursement	<ul style="list-style-type: none"> <li>- Anticipate a deferral of 3 months before the first repayment</li> <li>- By direct debit from your bank account</li> </ul>	<ul style="list-style-type: none"> <li>- The reimbursement is to start from the 1<sup>st</sup> month after the transfer of the advance</li> <li>- By direct debit from your bank account</li> </ul>	<b>For non-Europeans:</b> <ul style="list-style-type: none"> <li>✓ Passport + visa or residence permit</li> <li>✓ Certificate of enrolment</li> </ul>
Over how long?	Up to 25 months and €20 minimum/month	Up to a maximum of 2 years at €20 minimum/month	For foreign students, your birth certificate will be required some time after you submit your application.
The possibility of early reimbursement	Contact the service Loca-Pass with your dossier number	Contact the housing assistance service of the Toulouse City Hall +33 (0)5.61.22.31.91	
Where to get information/apply	<ul style="list-style-type: none"> <li>- Action logement: +33 (0)5.61.14.52.52 <a href="http://www.actionlogement.fr">www.actionlogement.fr</a></li> <li>- CRIJ Toulouse: +33 (0)5.61.21.20.20</li> <li>17 rue de Metz, 31000 Toulouse</li> </ul>	<a href="http://www.toulouse.fr/web/urbanisme-habitat/aides-aulogement/jeunes-instal-toit">www.toulouse.fr/web/urbanisme-habitat/aides-aulogement/jeunes-instal-toit</a> See the address book	Get information and submit your application as soon as you sign your rental contract at the Welcome Desk: 41 allées Jules Guesde 31000 Toulouse; or at <a href="http://www.caf.fr">www.caf.fr</a>



# THINK OUT OF THE BOX, THINK TOUL'BOX!



Université  
Fédérale  
Toulouse  
Midi-Pyrénées



# .02

## ACCOMMODATION IN TOULOUSE







Capitole



Compans  
Caffarelli



Work-study  
contracts

## RÉSIDENCE JARDINS DE L'UNIVERSITÉ - CROUS



**31, rue Valade - 31000 Toulouse**

On the campus of Université Toulouse 1 Capitole and TBS

**42 large studios - 31 to 34 m<sup>2</sup>** (2 students sharing)

**15 3-room units - 30 to 34 m<sup>2</sup>** (3 students sharing)

SERVICES +



CONTACT

05 62 25 62 28

[hebergement.arsenal@crous-toulouse.fr](mailto:hebergement.arsenal@crous-toulouse.fr)

[www.crous-toulouse.fr/logements/residences](http://www.crous-toulouse.fr/logements/residences)



City-centre

## RÉSIDENCE ARSENAL - CROUS



Capitole



Compans  
Caffarelli



Work-study  
contracts

**2, boulevard Armand Duportal - 31070 Toulouse**

On the campus of Université Toulouse 1 Capitole and TBS

**669 studettes (small studio flats) - 9 m<sup>2</sup>**

(individual shower and WC, communal kitchen)

**7 studettes** accessible to people with reduced mobility (or PRM).

SERVICES +



CONTACT

05 62 25 62 28

[hebergement.arsenal@crous-toulouse.fr](mailto:hebergement.arsenal@crous-toulouse.fr)

[www.crous-toulouse.fr/logements/residences](http://www.crous-toulouse.fr/logements/residences)



City-centre



## RÉSIDENCE CHAPOU - Crous



Compans  
Caffarelli



Work-study  
contracts

**1, rue Saunière - 31069 Toulouse cedex 7**

Close to the campus of Université Toulouse 1 Capitole and TBS

**1,161 studettes - 10 m<sup>2</sup>** (individual bathroom and individual or communal kitchen/ studettes, individual bathroom and equipped kitchen)

**12 studios - 18 m<sup>2</sup>** (on the ground floor, reserved for students with moderate disability)

### SERVICES +



### CONTACT

05 61 12 55 26

[hebergement.chapou@crous-toulouse.fr](mailto:hebergement.chapou@crous-toulouse.fr)

[www.crous-toulouse.fr/logements/residences](http://www.crous-toulouse.fr/logements/residences)



City-centre

## RÉSIDENCE L'AÉROPHILE - Crous



Compans  
Caffarelli



Work-study  
contracts

**4, rue Pierre Laplace - 31000 Toulouse**

Close to the campus of Université Toulouse 1 Capitole and TBS

**225 studios - 16-22 m<sup>2</sup>** (individual bathrooms and equipped kitchen)

**10 large studios / 1-bed unit) - 25-32 m<sup>2</sup>** (student couples or students with a child)

### SERVICES +



### CONTACT

05 62 25 62 48

[residence.laerophile@crous-toulouse.fr](mailto:residence.laerophile@crous-toulouse.fr)

[www.crous-toulouse.fr/logements/residences](http://www.crous-toulouse.fr/logements/residences)



City-centre





**A**  
Capitole

**B**  
Jeanne  
d'Arc

Work-study  
contracts

## RÉSIDENCE TAUR - Crous



**6, rue Bellegarde - 31000 Toulouse**

Close to the campus of Université Toulouse 1 Capitole

**56 studios - 16 m<sup>2</sup>** (individual bathrooms and equipped kitchen)

**6 large studios** (shared, 2 bedrooms with individual bathroom and equipped or communal kitchen)

**SERVICES +**



**CONTACT** 05 62 25 62 28

[hebergement.arsenal@crous-toulouse.fr](mailto:hebergement.arsenal@crous-toulouse.fr)

[www.crous-toulouse.fr/logements/residences](http://www.crous-toulouse.fr/logements/residences)



## RÉSIDENCE LARREY - Crous



**17 bis, rue Larrey - 31000 Toulouse**

Close to the campus of Université Toulouse 1 Capitole and TBS

**Studios** (individual bathrooms and equipped kitchen)

**Large studios** (shared, individual bathrooms and equipped kitchen)

**Duplex** (individual bathrooms and equipped kitchen)

**Duplex** (2 students, individual bathrooms and equipped kitchen)

**SERVICES +**



**CONTACT** 05 62 25 62 41

[residence.larrey@crous-toulouse.fr](mailto:residence.larrey@crous-toulouse.fr)

[www.crous-toulouse.fr/logements/residences](http://www.crous-toulouse.fr/logements/residences)







Work-study  
contracts



## RÉSIDENCE FIDÉLIO - Toulouse Métropole Habitat

**5-7 rue du Port Saint-Etienne 31000 Toulouse**

Close to the campus of Université Toulouse 1 Capitole and TBS

**152 accommodations:**

**101 studios of 18-22 m<sup>2</sup> - from €246 \***

**27 2-room units of 39 m<sup>2</sup> - from €422 \***

**24 3-room units of 40-48 m<sup>2</sup> - from €456 \***

(sharing possible – 2 bedrooms with individual bathroom)

All these accommodations have individual bathrooms  
and a kitchen with 2 vitroceramic hot plates.

**19 accommodations** are accessible to people with reduced mobility.

**SERVICES +**



**CONTACT** 0789227018

[logementsfidelio@tm-habitat.fr](mailto:logementsfidelio@tm-habitat.fr)

[www.toulouse-metropole-habitat.fr](http://www.toulouse-metropole-habitat.fr)



\*Provisional monthly rent with charges included





Lines 1, 15,  
29, 45, 70



Compans  
Cafarelli



Work-study  
contracts  
(Minimum  
one-month rental  
agreement)



## RÉSIDENCE CASTELBOU - Promologis

**Promologis**  
Groupe ActionLogement

**22, rue Léonce Castelbou - 31000 Toulouse**

Close to the campus of Université Toulouse 1 Capitole and TBS

**128 furnished accommodations:**

**One-room - 20 m<sup>2</sup>** (between €545\* and €565\*)

**Large studios - 30 m<sup>2</sup>** (€677\*)

**2-room units - 30 m<sup>2</sup>** (between €670\* and €700\*)

**Sharing for 2-room "shared" units - 1 PRM-accessible**

**SERVICES +**



**SERVICES €**



**CONTACT** 09 70 82 84 60

[contact-castelbou@promologis.fr](mailto:contact-castelbou@promologis.fr)

[www.promologis.fr](http://www.promologis.fr)

\*All charges are included







Carmes



Work-study  
contracts



## RÉSIDENCE HABITAT JEUNES ESPÉRANCE (URHAJ)

20 grande rue Nazareth - 31000 Toulouse

**82 accommodations** (from a room to a large studio)  
furnished, individual or communal bathrooms



SERVICES +



CONTACT

05 6152 4134

[habitatjeunesesperance@esperance31.org](mailto:habitatjeunesesperance@esperance31.org)

[www.esperance31.org](http://www.esperance31.org)





Capitole



Compans  
Caffarelli



Work-study  
contracts



## RÉSIDENCE HABITAT JEUNES ANATOLE FRANCE (URHAJ)



42 place Anatole France - 31000 Toulouse

27 accommodations (from a bedroom to 2-room units)

One 1-room unit (furnished with individual kitchenette)

SERVICES +



CONTACT 05 61 52 41 34

[habitatjeunesesperance@esperance31.org](mailto:habitatjeunesesperance@esperance31.org)

[www.esperance31.org](http://www.esperance31.org)



City-centre

## RÉSIDENCE LA COULÉE VERTE - Crous



Roseaie



Work-study  
contracts

31, rue Dinetard - 31500 Toulouse

119 studios - 16-20 m<sup>2</sup> (individual bathrooms and equipped kitchen)

SERVICES +



CONTACT 05 61 29 23 86

[residence.lacouleeverte@crous-toulouse.fr](mailto:residence.lacouleeverte@crous-toulouse.fr)

[www.crous-toulouse.fr/logements/residences](http://www.crous-toulouse.fr/logements/residences)



East Toulouse





**A**  
Roseraie



Lines 19  
and 36



Work-study  
contracts

## RÉSIDENCE LOUIS PLANA



### Patrimoine SA Languedocienne

**159, rue Louis Plana - 31500 Toulouse**

**201 studios - 21 m<sup>2</sup>** (water, heating and WiFi included) - €355  
Equipped kitchen (2 hot plates and fridge), bed, table and 2 chairs

SERVICES +



CONTACT 06 65 41 53 51

[location@sa-patrimoine.com](mailto:location@sa-patrimoine.com)

[www.sa-patrimoine.com](http://www.sa-patrimoine.com)



East Toulouse

## RÉSIDENCE PIERRE GARRIGUES



**A**  
Balma  
Gramont



Work-study  
contracts

**Crous 77, rue Saint Jean - 31130 Balma**

**72 studios - 17-18 m<sup>2</sup>**  
(individual bathrooms and equipped kitchen)

SERVICES +



CONTACT 05 61 29 23 86

[residence.lacouleeverte@crous-toulouse.fr](mailto:residence.lacouleeverte@crous-toulouse.fr)

[www.crous-toulouse.fr/logements/residences](http://www.crous-toulouse.fr/logements/residences)



East Toulouse





**A**  
Marengo  
SNCF



Lines 14  
and 22



Work-study  
contracts  
(Minimum  
one-month rental  
agreement)



## RÉSIDENCE LES TRIADES - Promologis

**Promologis**  
Groupe ActionLogement

12, rue de Périole - 31500 Toulouse

**109 furnished accommodations:**

**1-room unit 22 m<sup>2</sup> - €515 plus electricity**

**Large studio 32 m<sup>2</sup> - €650 plus electricity**

**Sharing not possible**

**33 accommodations PRM-accessible**

**SERVICES +**



**SERVICES €**



**CONTACT** 09 70 82 84 60

[contact-triades@promologis.fr](mailto:contact-triades@promologis.fr)

[www.promologis.fr](http://www.promologis.fr)



**East Toulouse**





Work-study  
contracts

tal



## RÉSIDENCE JOLIMONT - Habitat Jeunes Ô Toulouse (URHAJ)



22, avenue Yves Brunaud - 31500 Toulouse

### 172 furnished accommodations:

From bedrooms to large studios with kitchenette (two people)

#### SERVICES +



#### CONTACT 05 34 30 42 85

[www.otoulouse.org/habitat-jeunes-logement/alternants.html](http://www.otoulouse.org/habitat-jeunes-logement/alternants.html)

[www.otoulouse.org/habitat-jeunes-logement/  
hebergement-de-1-a-24-mois.html](http://www.otoulouse.org/habitat-jeunes-logement/hebergement-de-1-a-24-mois.html)

\*Gas, electricity and council tax included in the rate



East Toulouse





Université  
Paul Sabatier

Work-study  
contracts

## RÉSIDENCE MARYSE BASTIÉ - Crous



**118, route de Narbonne - 31077 Toulouse**

On the Rangueil campus

**259 1-room units - 18 m<sup>2</sup>** (individual bathrooms and equipped kitchen, adapted to people with reduced mobility)

**18 2-room units - 37 m<sup>2</sup>** (reserved for student couples or a student with a child, adapted to people with reduced mobility)

SERVICES +



CONTACT

05 62 25 62 00

[hebergement.rangueil@crous-toulouse.fr](mailto:hebergement.rangueil@crous-toulouse.fr)

[www.crous-toulouse.fr/logements/residences](http://www.crous-toulouse.fr/logements/residences)



South Toulouse



Ramonville

Work-study  
contracts

## RÉSIDENCE LES INTÉGRALES - Crous



**118, route de Narbonne - 31077 Toulouse**

On the Rangueil campus

**168 studios - 18 m<sup>2</sup>** (individual bathrooms and equipped kitchen)

**30 2-room units - 36 m<sup>2</sup>** (reserved for student couples or a student with a child)

**17 1-room units - 36 m<sup>2</sup>** (PRM-accessible)

**2 large studios - 39 m<sup>2</sup>** (accessible to people with serious disabilities)

SERVICES +



CONTACT

05 62 25 62 00

[hebergement.rangueil@crous-toulouse.fr](mailto:hebergement.rangueil@crous-toulouse.fr)

[www.crous-toulouse.fr/logements/residences](http://www.crous-toulouse.fr/logements/residences)



South Toulouse





Université  
Paul Sabatier

Work-study  
contracts

## RÉSIDENTE CLÉMENT ADER - Crous



**118, route de Narbonne - 31400 Toulouse**

On the Rangueil campus

**238 studios - 17-26 m<sup>2</sup>** (individual bathrooms and equipped kitchen)

**12 2-room units - 43 m<sup>2</sup>** (reserved for student couples or a student with a child)

**20 studios - 35 m<sup>2</sup>** (PRM-accessible)

**SERVICES +**



**CONTACT** 05 62 25 62 00

[hebergement.rangueil@crous-toulouse.fr](mailto:hebergement.rangueil@crous-toulouse.fr)

[www.crous-toulouse.fr/logements/residences](http://www.crous-toulouse.fr/logements/residences)



South Toulouse

## RÉSIDENTE LATÉCOËRE - Crous



**6, allées du Lieutenant Lucien Lafay - 31077 Toulouse**

On the Rangueil campus

**146 studios - 18 m<sup>2</sup>** (individual bathrooms and equipped kitchen)

**4 large studios (PRM-accessible)**

**SERVICES +**



**CONTACT** 05 62 25 62 00

[hebergement.rangueil@crous-toulouse.fr](mailto:hebergement.rangueil@crous-toulouse.fr)

[www.crous-toulouse.fr/logements/residences](http://www.crous-toulouse.fr/logements/residences)



Université  
Paul Sabatier  
ou Ramonville

Work-study  
contracts



South Toulouse





Ramonville

Work-study  
contracts

## RÉSIDENTIE JACQUELINE AURIOL - Crous



**6, mail Françoise Dolto - 31520 Ramonville-Saint-Agne**

Close to the Rangueil campus

**98 studios - 17-18 m<sup>2</sup>** (individual bathrooms and equipped kitchen)

SERVICES +



CONTACT 05 62 25 62 62

[hebergement.ponsan@crous-toulouse.fr](mailto:hebergement.ponsan@crous-toulouse.fr)

[www.crous-toulouse.fr/logements/residences](http://www.crous-toulouse.fr/logements/residences)



South Toulouse

## RÉSIDENTIE COLONEL ROCHE - Crous



Faculté de  
pharmacie  
ou Université  
Paul Sabatier

Work-study  
contracts

**15, avenue du Colonel Roche - 31400 Toulouse**

On the Rangueil campus

**502 studios - 18-23 m<sup>2</sup>** (individual bathrooms and equipped kitchen)

**25 studios PRM-accessible**

SERVICES +



CONTACT 05 61 12 55 70 ou 05 62 25 62 62

[hebergement.ponsan@crous-toulouse.fr](mailto:hebergement.ponsan@crous-toulouse.fr)

[www.crous-toulouse.fr/logements/residences](http://www.crous-toulouse.fr/logements/residences)



South Toulouse



## RÉSIDENTE INSA - Crous



**135, avenue de Rangueil - 31077 Toulouse**

On the Rangueil campus

**Studettes - 11 m<sup>2</sup>** (individual showers, communal WC and equipped kitchen)

**Studios - 18 m<sup>2</sup>** (equipped kitchen, individual showers and communal or individual bathrooms)

**Large studios** (sharing, 2 individual bedrooms, equipped kitchen, individual showers and individual or communal WC)

SERVICES +



CONTACT 05 61 55 99 44

[hebergement.insa@crous-toulouse.fr](mailto:hebergement.insa@crous-toulouse.fr)



South Toulouse



Work-study contracts

## RÉSIDENTE IAS - Crous



**23, avenue Edouard Belin - 31400 Toulouse**

On the IAS campus

**Studettes - 12 m<sup>2</sup>** (equipped kitchen and individual bathrooms)

**Studios - 25 m<sup>2</sup>** (equipped kitchen and individual bathrooms)

**2-room units / 2-room units for people with reduced mobility - 35 m<sup>2</sup>**  
(sharing, 2 bedrooms, equipped kitchen and individual bathrooms)

SERVICES +



CONTACT 05 61 12 54 72

[hebergement.ias@crous-toulouse.fr](mailto:hebergement.ias@crous-toulouse.fr)

[www.crous-toulouse.fr/logements/residences](http://www.crous-toulouse.fr/logements/residences)



South Toulouse





Faculté de  
pharmacie

Work-study  
contracts

## RÉSIDENCE THALÈS - Crous



**118, route de Narbonne - 31077 Toulouse**

On the Rangueil campus

**83 studios - 18 m<sup>2</sup>** (individual bathrooms and equipped kitchen)

**4 large studios** (sharing, 2 bedrooms, communal kitchens and individual bathrooms)

**10 2-room units - 27 m<sup>2</sup>** (reserved for student couples or a student with a child)

SERVICES +



CONTACT 05 62 25 62 00

[hebergement.rangueil@crous-toulouse.fr](mailto:hebergement.rangueil@crous-toulouse.fr)

[www.crous-toulouse.fr/logements/residences](http://www.crous-toulouse.fr/logements/residences)



South Toulouse



Faculté de  
pharmacie

Work-study  
contracts

## RÉSIDENCE PYTHAGORE - Crous



**118, route de Narbonne - 31077 Toulouse**

On the Rangueil campus

**149 studios - 16-19.5 m<sup>2</sup>** (individual bathrooms and equipped kitchen)

**56 2-room units - 40 m<sup>2</sup>** (reserved for student couples or a student with a child)

**4 3-room units - 62 m<sup>2</sup>** (reserved for student couples with a child)

**12 1-room units PRM-accessible**

SERVICES +



CONTACT 05 62 25 62 00

[hebergement.rangueil@crous-toulouse.fr](mailto:hebergement.rangueil@crous-toulouse.fr)

[www.crous-toulouse.fr/logements/residences](http://www.crous-toulouse.fr/logements/residences)



South Toulouse



# Être étudiant, ça se prépare !

Pour faciliter vos démarches  
connectez-vous sur le site  
**WELCOMEDSK**



<https://welcomedesk.univ-toulouse.fr/>

#logement #orientation  
#culture #sport  
#sports #santé #travail



Université  
Fédérale  
Toulouse  
Midi-Pyrénées



J'AI TROUVÉ  
UN LOGEMENT ✓

J'AI BESOIN  
D'UN GARANT ✓

IL ME SUFFIT  
D'UN CLIC POUR  
L'OBTENIR

**VISALE.FR**  
CONNECTE EMPLOI ET LOGEMENT

## STUDENTS,

## THINK VISALE.FR

THE SOLUTION  
THAT IS  
100 % FREE  
AND REASSURES  
YOUR LANDLORD!

Visale est une marque déposée pour le compte d'Action Logement et le site [www.visale.fr](http://www.visale.fr) appartient à l'APAGL.  
L'aide est soumise à conditions et octroyée sous réserve de l'accord d'Action Logement Services.  
Pour connaître les modalités, consultez [www.visale.fr](http://www.visale.fr).

**ActionLogement**

Mai 2018 - Action Logement Services - Siège social : 66 avenue du Maine, 75652 Paris Cedex 14  
SAS au capital de 20 millions d'euros - Société de financement agréée - 624 541 145 RCS Paris - ORIAS T006232



## RÉSIDENCE RANGUEIL

(Les Tripodes: Archimède, Bichat, Curie) - Crous

**118, route de Narbonne - 31400 Toulouse**

On the Rangueil campus

**1,809 studettes** (equipped or communal kitchen and individual bathrooms)

**9 studios - 16 m<sup>2</sup>** (reserved for top athletes)

SERVICES +



CONTACT 05 62 25 62 00

[hebergement.rangueil@crous-toulouse.fr](mailto:hebergement.rangueil@crous-toulouse.fr)

[www.crous-toulouse.fr/logements/residences](http://www.crous-toulouse.fr/logements/residences)



South Toulouse

## RÉSIDENCE OLYMPES DE GOUGES

**Crous 35, rue Maurice Bécane - 31078 Toulouse**

On the Rangueil Medicine campus and close to the Université Toulouse 3 Paul Sabatier

**295 studios - 16-21 m<sup>2</sup>** (individual bathrooms and equipped kitchen)

**60 2-room units - 30 m<sup>2</sup>** (reserved for student couples)

SERVICES +



CONTACT 05 62 25 62 62

[hebergement.ponsan@crous-toulouse.fr](mailto:hebergement.ponsan@crous-toulouse.fr)

[www.crous-toulouse.fr/logements/residences](http://www.crous-toulouse.fr/logements/residences)



South Toulouse





Université  
Paul Sabatier

Work-study  
contracts

## RÉSIDENCE PAUL VOIVENEL 1 & 2 - Crous



**35, rue Maurice Bécane - 31078 Toulouse**

On the Rangueil Medicine campus and close to the Université  
Toulouse 3 Paul Sabatier

**Studios - 17-21 m<sup>2</sup>** (individual bathrooms and equipped kitchen)

**6 accommodations PRM-accessible**

SERVICES +



CONTACT 05 62 25 62 62

[hebergement.ponsan@crous-toulouse.fr](mailto:hebergement.ponsan@crous-toulouse.fr)

[www.crous-toulouse.fr/logements/residences](http://www.crous-toulouse.fr/logements/residences)



South Toulouse

## RÉSIDENCE AT'OME - Crous



**35, rue Maurice Bécane - 31078 Toulouse**

On the Rangueil Medicine campus and close to the Université  
Toulouse 3 Paul Sabatier

**100 1-room units** (individual bathrooms and equipped kitchen.  
Possibility of having a balcony)

SERVICES +



CONTACT 05 62 25 62 62

[hebergement.ponsan@crous-toulouse.fr](mailto:hebergement.ponsan@crous-toulouse.fr)

[www.crous-toulouse.fr/logements/residences](http://www.crous-toulouse.fr/logements/residences)



South Toulouse



Université  
Paul Sabatier

Work-study  
contracts





Université  
Paul Sabatier

Work-study  
contracts

## RÉSIDENCE PARC BELLEVUE - Crous



**3, avenue du Professeur Ducuing - 31400 Toulouse**

Between the Rangueil Medicine campus and l'Université Toulouse 3 Paul Sabatier

**150 large studios** (sharing, 2 bedrooms with bathroom and communal kitchen)

**3 1-room units with disabled access**

SERVICES +



CONTACT 05 62 25 62 62

[hebergement.ponsan@crous-toulouse.fr](mailto:hebergement.ponsan@crous-toulouse.fr)

[www.crous-toulouse.fr/logements/residences](http://www.crous-toulouse.fr/logements/residences)



South Toulouse

## RÉSIDENCE NOTRE-DAME - Crous



**12, rue Notre-Dame - 31400 Toulouse**

Close to ESPE, Rangueil campus and UT1 by Metro

**78 studios - 16-26 m<sup>2</sup>** (individual bathrooms and equipped kitchen)

**11 2-room units - 29-39 m<sup>2</sup>** (reserved for student couples or a student with a child)

**3 studios accessible to people with reduced mobility**

SERVICES +



CONTACT 05 61 12 55 37

[hebergement.faucher@crous-toulouse.fr](mailto:hebergement.faucher@crous-toulouse.fr)

[www.crous-toulouse.fr/logements/residences](http://www.crous-toulouse.fr/logements/residences)



Saint-Michel  
Marcel Langer

Work-study  
contracts



South Toulouse





## RÉSIDENCES INSA - Promologis

Promologis  
Groupe ActionLogement

4/6/8/10, allée des Sciences appliquées 31400 Toulouse / P

141, avenue de Rangueil - 31400 Toulouse / P

17, avenue du Colonel Roche - 31400 Toulouse / 🏠 🌿

Close to UPS campus, INSA, ISAE-SUPAERO

**1,415 furnished accommodations:**

**1-room unit 20 m<sup>2</sup> - €430 / 1-room unit 22 m<sup>2</sup> - €450 / Large studio,**

**2-room unit 30 m<sup>2</sup> and 40 m<sup>2</sup> - €515 and €670**

**Sharing possible in a 2-room unit with only one bedroom**

SERVICES +



SERVICES €



CONTACT 09 70 82 84 60

[a.insa@promologis.fr](mailto:a.insa@promologis.fr)

[www.promologis.fr](http://www.promologis.fr)



South Toulouse

## RÉSIDENCE DANIEL FAUCHER



Crous

**11, allée Camille Soula - 31078 Toulouse**

**388 studettes - 9 m<sup>2</sup>** (individual bathrooms and equipped

kitchen) **484 studios - 18 m<sup>2</sup>** (individual bathrooms and equipped kitchen)

**28 large studios - 33-37 m<sup>2</sup>** (sharing, 2 bedrooms with individual bathrooms and equipped kitchen) - **34 2-room units - 27 m<sup>2</sup>** (reserved for student couples or a student with a child)

SERVICES +



CONTACT 05 61 12 55 37

[hebergement.faucher@crous-toulouse.fr](mailto:hebergement.faucher@crous-toulouse.fr)

[www.crous-toulouse.fr/logements/residences](http://www.crous-toulouse.fr/logements/residences)



Empalot



Work-study contracts



South Toulouse

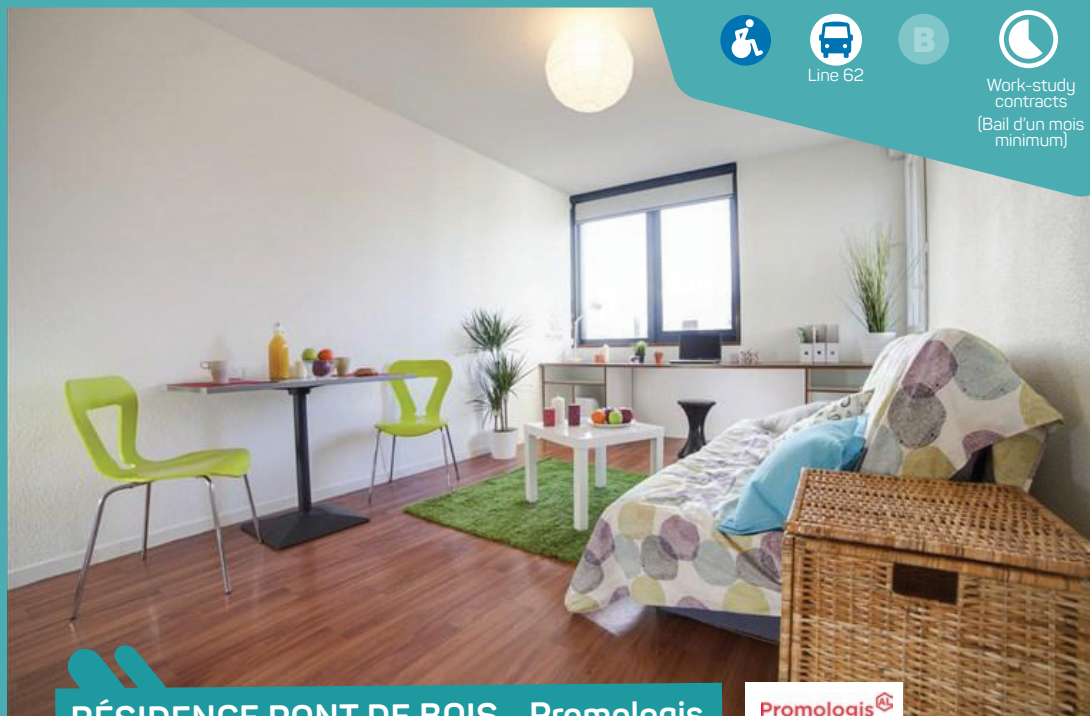




Line 62



Work-study  
contracts  
(Bail d'un mois  
minimum)



## RÉSIDENCE PONT DE BOIS - Promologis

**Promologis**  
Groupe ActionLogement

**15, allée Ville Tarn - 31320 Auzeville Tolosane**

Close to ENSAT and the Rangueil campus (10 minutes by car)

**200 furnished accommodations:**

**1-room unit 20 m<sup>2</sup> with parking - €422 / without parking - €412**

**Large studio/2-room unit 33 m<sup>2</sup> with parking - €520**

**2-room shared unit 46 m<sup>2</sup> - €697**

**SERVICES +**



**SERVICES €**



**CONTACT** 09 70 82 84 60

[contact-pontdebois@promologis.fr](mailto:contact-pontdebois@promologis.fr)

[www.promologis.fr](http://www.promologis.fr)



**South Toulouse**





Lines 23,  
27 and 80



Montaudran  
train station



Work-study  
contracts

## RÉSIDENCE PATAGONIA MONTAUDRAN – Oh! mon appart' étudiant

**Rue Jacqueline Auriol - 31400 Toulouse**

Close to Rangueil campus



**208 accommodations**

**From 1-room to 4-room units between 18 and 70m<sup>2</sup> furnished**

€266 excl. charges/month

Sharing is possible for some accommodations

(3-room and 4-room units)

**13 accommodations accessible to people with reduced mobility**

**SERVICES +**



**CONTACT**

[contact@oh-monappartetudiant.fr](mailto:contact@oh-monappartetudiant.fr)

[www.oh-monappartetudiant.fr](http://www.oh-monappartetudiant.fr)



**South Toulouse**





**B**  
Faculté de  
Pharmacie



Work-study  
contracts



## RÉSIDENCE LES ROSES - Groupe Les Chalets



**54 rue des Roseaux - 31400 Toulouse**

Close to Rangueil campus



**94 accommodations**

**From 1-room to 5-room units between 20 and 100m<sup>2</sup>** (unfurnished, with balcony) from €275 excl. charges/month

**SERVICES +**



**CONTACT**

[contact@oh-monappartetudiant.fr](mailto:contact@oh-monappartetudiant.fr)

[www.oh-monappartetudiant.fr](http://www.oh-monappartetudiant.fr)



**South Toulouse**





# Les bons plans étudiants



Location, co-location  
Du studio au 4 pièces  
Près des universités

**À partir de  
227 €/mois HC**  
et avant APL

## Des avantages ++

- APL
- LOCAPASS
- 0 FRAIS DE DOSSIER



[www.oh-monappartetudiant.fr](http://www.oh-monappartetudiant.fr)  
[contact@oh-monappartetudiant.fr](mailto:contact@oh-monappartetudiant.fr)





Work-study  
contracts



## RÉSIDENCE ISAE - Colomiers Habitat



**4 avenue Edouard Belin - 31400 Toulouse**

On the ISAE-SUPAERO campus

**931 rooms between 14 - 19 m<sup>2</sup> - rent €299 - €426**

The rooms are furnished (90 cm single bed, desk, storage, fridge and combined microwave/oven) and have an individual bathroom. The following are furnished (140 cm bed, desk, storage) and have an equipped kitchenette and an individual bathroom. They are available to student couples but not for sharing.

**15 large studios 28 m<sup>2</sup> - €550**

**30 studios 25 m<sup>2</sup> - €511**

**5 duplex 32 m<sup>2</sup> - €592**

**1 duplex 46 m<sup>2</sup> - €572**

The rent includes charges (electricity, water, heating, maintenance).

Some of them are suitable for people with reduced mobility.

1-year renewable contracts and short-term contracts from 16 days to 2 months

SERVICES +



CONTACT

05 32 11 05 50

[info.isae@colomiers-habitat.fr](mailto:info.isae@colomiers-habitat.fr)

[www.colomiers-habitat.fr/locations](http://www.colomiers-habitat.fr/locations)



South Toulouse



## RÉSIDENCE BLAISE PASCAL



Colomiers Habitat

150 avenue de Lespinet - 31400 Toulouse

Close to the Rangueil campus

**260 furnished accommodations** with equipped kitchenette

The charges are included in the rent

**245 1-room units 18 m<sup>2</sup> - €360**

**15 large studios 27 m<sup>2</sup> - €535**

Short stays are possible

SERVICES +



CONTACT 05 62 88 00 37

[blaisepascal@colomiers-habitat.fr](mailto:blaisepascal@colomiers-habitat.fr)

[www.colomiers-habitat.fr/locations](http://www.colomiers-habitat.fr/locations)



Lines 23,  
27 and 80

Work-study  
contracts



South Toulouse

## RÉSIDENCE LE COLOMBIER LABÈGE

Colomiers Habitat

395 rue du Colombier

31760 Labège



Close to the Rangueil campus by car, public transport and cycle paths

**302 furnished accommodations** with equipped kitchen and individual bathrooms / **298 1-room units 21 m<sup>2</sup> - €370** (excl. electricity) / **6 2-room units 42 m<sup>2</sup> - €585** (excl. electricity) / **6 1-room units suitable for people with reduced mobility** / Sharing is possible but no joint contracts are available

SERVICES +



CONTACT 05 34 31 82 50

[lubese@colomiers-habitat.fr](mailto:lubese@colomiers-habitat.fr)

[www.colomiers-habitat.fr/locations](http://www.colomiers-habitat.fr/locations)



Lines 79  
and 80

Work-study  
contracts



South Toulouse



# Student guide

Université Fédérale Toulouse Midi-Pyrénées

2018-2019



**l'accueil**  
welcome desk  
Université  
Fédérale  
Toulouse  
Midi-Pyrénées  
[welcomedesk.univ-toulouse.fr](http://welcomedesk.univ-toulouse.fr)



Université  
Fédérale  
Toulouse  
Midi-Pyrénées

[welcomedesk.univ-toulouse.fr](http://welcomedesk.univ-toulouse.fr)



## RÉSIDENCES HUMANITÉS 1 & 2



A  
Jean-Jaurès  
Université



Work-study  
contracts

**Crous** 5, allées Antonio Machado - 31058 Toulouse cedex 9

On the UT2J campus and close to the Toulouse School of Architecture

**187 1-room units - 18 m<sup>2</sup>** (individual bathrooms and equipped kitchens)

**10 large studios sharing - 34 m<sup>2</sup>** (2 bedrooms with bathroom and equipped kitchen) /

**97 2-room units - 47 m<sup>2</sup>** (reserved for student couples or a student with a child) /

**6 3-room units - 65 m<sup>2</sup>** (reserved for student couples with a child)

**SERVICES +**



**CONTACT** 05 61 12 55 19

[residence.humanites@crous-toulouse.fr](mailto:residence.humanites@crous-toulouse.fr)

[www.crous-toulouse.fr/logements/residences](http://www.crous-toulouse.fr/logements/residences)



West Toulouse

## RÉSIDENCE JEAN GILLES



**Patrimoine SA Languedocienne**



A  
Jean-Jaurès  
Université



Work-study  
contracts

**10, rue Jean Gilles - 31100 Toulouse**

Close to Jean-Jaurès campus

**58 accommodations:**

**1-room unit 48 m<sup>2</sup> - €497**

**2-room unit 45 m<sup>2</sup> - €410**

**3-room unit 71 m<sup>2</sup> - €482 (sharing)**

**4-room unit 80 m<sup>2</sup> - €562 (sharing)**

Water, electricity and Internet are included in the rent

Unfurnished with equipped kitchen

(2 hotplates and fridge)

**CONTACT** Bertrand SOULA 06 65 41 53 51

[location@sa-patrimoine.com](mailto:location@sa-patrimoine.com)

[www.sa-patrimoine.com](http://www.sa-patrimoine.com)



West Toulouse





**A**  
Jean-Jaurès  
Université



Work-study  
contracts



## RÉSIDENCE CONSTANTINOPLE - Groupe Les Chalets



**4 rue Ferdinand Laulanié - 31100 Toulouse**

On the Jean-Jaurès campus

**320 accommodations: 1- to 3-room units between 19 - 60 m<sup>2</sup>** furnished  
(some with balcony). From €256 excl. charges/month  
Sharing is possible for some flats.

SERVICES +



CONTACT

[contact@oh-monappartetudiant.fr](mailto:contact@oh-monappartetudiant.fr)  
[www.oh-monappartetudiant.fr](http://www.oh-monappartetudiant.fr)



West Toulouse

## RÉSIDENCE ARAGON

**Oh! mon appart' étudiant**

**6 rue du 11 novembre 1918 - 31100 Toulouse**

Close to Jean-Jaurès campus



**A**  
Jean-Jaurès  
Université



**T**  
Tramlines  
1 & 2  
Arènes



Work-study  
contracts

**222 accommodations: 1- and 2-room units between 18 - 46 m<sup>2</sup>** furnished  
From €227 excl. charges/month  
Sharing is possible for some accommodations (3-room and 4-room units)

SERVICES +



CONTACT

[contact@oh-monappartetudiant.fr](mailto:contact@oh-monappartetudiant.fr)  
[www.oh-monappartetudiant.fr](http://www.oh-monappartetudiant.fr)



West Toulouse





**A**  
Jean-Jaurès  
Université

**T**  
Tramlines  
1 & 2  
Arènes



Work-study  
contracts

## RÉSIDENCE APOLLINAIRE - Groupe Les Chalets



**4 place Agapito Nadal - 31100 Toulouse**

Close to Jean-Jaurès campus

**173 accommodations: 1- and 2-room units between 18 - 37 m<sup>2</sup> furnished**

From €244 excl. charges/month

SERVICES +



CONTACT

[contact@oh-monappartetudiant.fr](mailto:contact@oh-monappartetudiant.fr)  
[www.oh-monappartetudiant.fr](http://www.oh-monappartetudiant.fr)



West Toulouse

## RÉSIDENCE DE L'ÉCOLE VÉTÉRAIRE

**(ENVT) - Groupe Des Chalets**



**51 Chemin des Capelles - 31100 Toulouse**

Accommodations run by the Veterinary School for its own students.

**252 accommodations: 1-room units and large studios between 19 - 23 m<sup>2</sup> furnished / From €296 including charges**

SERVICES +



CONTACT

05 61 19 38 00  
Contact the ENVT directly



West Toulouse





Lines 12,  
15 and 52

Work-study  
contracts



## RÉSIDENCE HABITAT JEUNES SAN FRANCISCO (URHAJ)



**92 route d'Espagne - 31100 Toulouse**

Close to Jean-Jaurès campus

**85 bedrooms 13 m<sup>2</sup>** – €389 (water and electricity included), individual bathrooms

SERVICES +



CONTACT 05 61 43 23 00

[accueil.sanfrancisco@ucrm.fr](mailto:accueil.sanfrancisco@ucrm.fr)

[www.ucrm.fr](http://www.ucrm.fr)

Pick up an application form on site



West Toulouse





Lines 12,  
15 and 52



Work-study  
contracts



## RÉSIDENCE HABITAT JEUNES ANADYR (URHAJ)

**108 route d'Espagne - 31100 Toulouse**

Close to Jean-Jaurès campus

**12 2-room units** (equipped and furnished, ideal for couples)

**CONTACT** 05 61 43 23 00

[accueil.sanfransisco@ucrm.fr](mailto:accueil.sanfransisco@ucrm.fr)

[www.ucrm.fr](http://www.ucrm.fr)

Pick up an application form on site



West Toulouse



## Other accommodation possibilities

### ACCOMMODATION IN PRIVATE HOMES:

#### Consult private offers:

Many private individuals offer accommodation for students, particularly furnished accommodation.

From the month of May, many students begin to leave their accommodation. It is from this time until the end of July that there are the most adverts for bedrooms, studios, 1-room units, large studios or large flats for sharing.

The price of the rent depends on the size of the accommodation and its location, but don't forget that all students have the right to housing benefits. On average the price of a 1-room unit in the city centre varies from €420 to €550.

#### You can consult:

The CRIJ offers: at 17, rue de Metz - 31000 Toulouse from 10 am to 12.30 pm and 1.30 pm to 6 pm or at [www.crij.org](http://www.crij.org)

#### Don't forget the student life advice centre within your establishment!

Université Toulouse 3 Paul Sabatier students can consult the list of accommodations on the site <http://housing.univ-tlse3.fr/fr>

### INTER-GENERATIONAL ACCOMMODATION:

Also called inter-generational sharing, this consists of a student living in the home of a "senior" who has empty rooms in their home. This type of accommodation, which is developing rapidly, has advantages for the student who, in exchange for some more or less significant help, benefits from a low rent or sometimes free accommodation, while the "senior" has the reassurance of company and an and no longer feels isolated.

In Toulouse, two associations offer intergenerational accommodation:

#### Mieux Ensemble :

[www.mieuxensemble-toulouse.fr](http://www.mieuxensemble-toulouse.fr)

[mieuxensemble.toulouse@gmail.com](mailto:mieuxensemble.toulouse@gmail.com)

Contact: Ghislaine Blanchard +33 (0)6.95.01.09.47

Two places to meet them:

#### La Mijoteuse

Place Joseph Verseille, 31770 Colomiers

Thursday from 9 am to 5 pm by appointment

The Crous offers are at [www.lokaviz.fr](http://www.lokaviz.fr)

Offers at [www.pap.fr](http://www.pap.fr)

Offers at [www.leboncoin.fr](http://www.leboncoin.fr): be careful of offers which are «too good to be true!» You can spot these offers by the professional photographs + a low rent + and the absence of a contact telephone number. It can happen that you are asked to make a deposit to reserve the accommodation. Be careful you don't fall into this trap!

The site [www.seloger.com](http://www.seloger.com) proposes offers from individuals and agencies The main agencies are: [www.fnaim.fr](http://www.fnaim.fr) - [www.snpi.com](http://www.snpi.com) - ...

The offers are directly on the agency's own website: be careful of list brokers! Never agree to pay money for a list of rental accommodation.

#### At the CRIJ

17, rue de Metz

31000 Toulouse

By appointment, Monday or Tuesday from 2 to 5 pm

#### Ensemble 2 Générations:

[www.ensemble2generations.fr](http://www.ensemble2generations.fr)

[toulouse@ensemble2generations.fr](mailto:toulouse@ensemble2generations.fr)

22, rue Déodora

31400 Toulouse

Contact: +33 (0)6.20.75.17.97



## ROOMS IN PRIVATE HOMES:

Stay for free by swapping your room with another student in their family home with

[www.swapandstudy.com](http://www.swapandstudy.com)

Offers of rooms to rent by registering for free on Roomlala [www.chambrealouer.com](http://www.chambrealouer.com)

Host family rooms with the association Accueil en Région Toulousaine <http://art.ok.free.fr>

Immersion in host families: [www.ac-tif.fr](http://www.ac-tif.fr)

## SHARED ACCOMMODATION:

### • Consult the offers:

The site created by young people in Toulouse to help you find someone to share with by establishment and interests and also to find accommodation: [www.bubbleflat.com](http://www.bubbleflat.com)

Consult the flat-sharing offers by registering for free at: [www.lacartedescolocs.fr](http://www.lacartedescolocs.fr)

Find someone to share with or shared accommodation with the help of a free basic account that lets you contact only some people (otherwise, you need to create a fee-paying premium account).

[www.appartager.com](http://www.appartager.com)

Free sharing offers at

[www.crij.org](http://www.crij.org) and [www.lokaviz.fr](http://www.lokaviz.fr)

Don't forget social networks!

### • Sharing with Projet Solidaire Kap's:

At the start of each academic year, the AFEV Toulouse, the city's Students Foundation Association, offers places in the Kaps - kolocations à projets solidaires.

- ✓ 24 places in shared, furnished accommodation (3- to 6-room units)
- ✓ 1 common area, laundry and bicycle storage
- ✓ Places for 70 students (and only students)
- ✓ The residence is located 3 minutes on foot from the UT2J, 15 minutes from the city centre (Metro A, Mirail U stop) and 30 minutes from the other university campuses

### • In private university halls:

The private university halls propose additional services compared with other student residences, so the rents are correspondingly higher. Certain private student halls offer shared accommodation. All the residences are at [www.adele.org](http://www.adele.org)

- ✓ Rent between €235 and €254 all charges included (before deduction of housing benefits)

- ✓ 5 hours of commitment per week from September to June (2 hours helping a child or young person and 3 hours for a solidarity project)

Being a kapseur is to put your energy and creativity at the service of an innovative project, compatible with studies close to home, and to participate in activities with locals and partners around a variety of themes (education, the environment, events, culture, sport).

Motivated? You can find more information on the koloc solidaire site and register to be contacted! [kolocsolidaire.org/toulouse](http://kolocsolidaire.org/toulouse)

- There are also private student halls which are not included in this guide.

### • And there are also some temporary accommodation possibilities...

[www.lapetiteaubergedesaintsernin.com](http://www.lapetiteaubergedesaintsernin.com)

17 rue d'Embarthe - 31000 Toulouse

+33 (0)7.60.88.17.17

[auberge.toulouse@gmail.com](mailto:auberge.toulouse@gmail.com)

[otoulouse.org](http://otoulouse.org)

(the URHAJ - youth hostel / Metro Jolimont

2 av. Yves Brunaud 31500 Toulouse)

[www.yestudent.com](http://www.yestudent.com)

[www.airbnb.fr](http://www.airbnb.fr)

[www.couchsurfing.com](http://www.couchsurfing.com)

[www.crous-toulouse.fr/courts-sejours](http://www.crous-toulouse.fr/courts-sejours)

[www.bedandcrous.com](http://www.bedandcrous.com)

(Résidence Daniel Faucher in Toulouse)



## Furnishing: Think recycling!

Not all students can or want to live in furnished accommodation.

But furniture is expensive, especially when you have paid the security deposit, the first month's rent, etc.

**Fortunately, there are ways of spending less money while being ecological and respecting the environment!**

### **LE TRI SERA TOP - La Ressourcerie du Mirail**

This association of students from UT2J aims to reduce waste and raise environmental awareness. To achieve this, they offer to collect objects and give them a new life (be that through cleaning, repairs or the creation of a new object); these objects are then sold, donated or recycled.

The resource centre is made up of a sales space where you can find what you need without spending too much money. When you move out, you can then bring your own objects back to the association to be used by other students like you! The Tri Sera Top also proposes workshops and organises events.

**95 rue Vauquelin 31100 Toulouse**

**More info: [facebook.com/letriseratop](https://facebook.com/letriseratop)**

**[letriseratop@riseup.net](mailto:letriseratop@riseup.net)**

**+33 (0)7 61 53 31 72**

### **RUECUP**

This is an app which lets you locate furniture that has been left in the street so that you can give it a new life!

**[www.ruecup.com](http://www.ruecup.com)**

### **THE ENVIE NETWORK**

Envie is a network of social enterprises which will allow you to equip yourself with second-hand electrical goods. When you buy a fridge, an oven or a cooker in one of the network's shops, you are supporting a reinsertion project, helping to reduce consumption and waste, and saving money!

**Envie Toulouse:**

**29, boulevard de Thibaud 31100 Toulouse**

**Monday to Saturday**

**9 am - 12.30 pm / 1.30 pm - 7 pm**

**+33 (0)5.34.61.22.86**

**Recycling site: 21, avenue du Bois Vert,  
Portet sur Garonne +33 (0)5.34.63.10.49**

**[www.envie.org](http://www.envie.org)**

### **LA GLANERIE**

This is a Toulouse resource centre for the protection of the environment, and it is also a workshop as part of a reinsertion project.

There are two shops in Toulouse for furniture, objects, toys and clothes.

**[www.la-glanerie.org/association](http://www.la-glanerie.org/association)**

### **LES CARTONS**

A new online, cooperative platform for clearing out flats. It connects people looking to furnish their accommodation with people who are clearing theirs out.

**[www.lescarts.fr](http://www.lescarts.fr)**

### **DON'T FORGET...**

- The donation boxes available in the Crous residence halls.
- The Emmaüs shops where you can buy furniture, crockery, clothes, etc. for very little or, conversely, you can donate to the association.

**[www.emmaus31.org](http://www.emmaus31.org)**

- "Vides-greniers"- car boot sales from April to the end of October.

**[www.vide-greniers.org](http://www.vide-greniers.org)**

**[www.donnons.org](http://www.donnons.org)**

**[www.freecycle.org](http://www.freecycle.org)**



## Be informed, advised, guided:

### The accommodation address book for students in Toulouse

#### WELCOME DESK

For advice about your search for accommodation and your best points of contact.

**41 allées Jules Guesde 31000 Toulouse**

**Metro line B** - Carmes or Palais de Justice  
[laccueil@univ-toulouse.fr](mailto:laccueil@univ-toulouse.fr)

**Hours:** 9 am - 5 pm non-stop from December to August inclusive / 9 am - 6 pm from September to November inclusive.

#### THE CAF FOR STUDENTS

For information from an agent about housing benefits and to make your request online

**41 allées Jules Guesde 31000 Toulouse**

**Metro line B** - Carmes or Palais de Justice  
**Hours:** 9 am - 12 pm / 1 pm - 5 pm from May to August inclusive / 9 am - 5 pm from September to April inclusive.

#### CRIJ

(Regional Youth Information Centre).

The Crij informs young people about accommodation and helps them in the search process.

**17 rue de Metz 31000 Toulouse**

**+33 (0)5.61.21.20.20**

**Metro line A** - Esquirol

**Hours:** 10 am - 12.30 pm / 1.30 pm - 6 pm  
"Support for rights and procedures" service:  
by appointment on Tuesdays and Thursdays  
from 1.30 pm to 5 pm.

#### ADIL 31

(Departmental Agency for Housing Information).  
The Adil gives free advice on legal and financial matters related to housing

**4 rue Furgole 31000 Toulouse**

**Metro line B** - Carmes or Palais de Justice  
**+33 (0)5.61.22.46.22**

[info@adil31.org](mailto:info@adil31.org)

[www.adil31.org](http://www.adil31.org)

#### TOULOUSE CITY HALL (SCHS)

Communal Service for Health and Hygiene  
"Stop indecent housing": your accommodation is unacceptable, insalubrious or degraded if it presents risks to the health and/or the safety of its occupants.

**17 place de la Daurade 31000 Toulouse**

**+33 (0)5.61.22.23.32**

[hygiene@mairie-toulouse.fr/](mailto:hygiene@mairie-toulouse.fr)

[www.toulouse.fr/web/sante/service-communald-hygiene-et-de-sante/habitat-degradechez-les-jeunes](http://www.toulouse.fr/web/sante/service-communald-hygiene-et-de-sante/habitat-degradechez-les-jeunes)

#### TOULOUSE CITY HALL

Directorate of Solidarity and Social Cohesion.  
Accommodation - Housing Service (Instal'Toit).

**1 rue Delpech - 3<sup>e</sup> étage**

**31000 Toulouse**

**+33 (0)5.61.22.31.91**

#### CLLAJ 31

(Local Committee for Autonomous Housing for Young People).

Collection of housing application forms, active search tools, information, etc.

Wednesday from 2 pm - 4.30 pm at the Crij /  
Thursday 4 pm - 7.30 pm at the Clلاج 31.

**2 impasse Michel Labrousse**

**La Maison des Lois 4<sup>e</sup> étage**

**31100 Toulouse**

**+33 (0)5.61.23.60.19**

[contact-cllag31@ajh.fr](mailto:contact-cllag31@ajh.fr)

#### ESPACE DIVERSITÉS LAÏCITÉ

If you think that you have been a victim of discrimination during your search for accommodation.

**38 rue d'Aubuisson 31000 Toulouse**

**Metro line B** - François Verdier

**+33 (0)5.81.91.79.60**

[espace-diversites-laicite@mairie-toulouse.fr](mailto:espace-diversites-laicite@mairie-toulouse.fr)



FOR  
SUPERCHARGED  
YOUNG PEOPLE



fréquences JEUNES

ABONNEMENT TER - 26 ANS  
VOYAGEZ EN ILLIMITÉ  
PRIX EN BAISSÉ

EXCLUSIVITÉ RÉGION OCCITANIE

© L'AGENCE urdore

[ter.sncf.com/occitanie](http://ter.sncf.com/occitanie)





.03

ACCOMMODATION  
IN OTHER  
TOWNS





Work-study  
contracts

## RÉSIDENCE LAPÉROUSE



2, rue Descartes - 81000 Albi

**46 1-room units - 19 m<sup>2</sup>** (equipped kitchen and individual bathroom)

**2 1-room units ground floor - 31 m<sup>2</sup>** (for couples or people with reduced mobility)

SERVICES +



CONTACT

05 63 48 16 92

[contact.albi@crous-toulouse.fr](mailto:contact.albi@crous-toulouse.fr)



## RÉSIDENCE L'ASTROLABE



13, rue de la Poudrière - 81000 Albi

On the university campus

**64 1-room units - 19-25 m<sup>2</sup>** (equipped kitchen and individual bathroom)

**4 1-room units PRM-accessible**

SERVICES +



CONTACT

05 63 48 16 92

[contact.albi@crous-toulouse.fr](mailto:contact.albi@crous-toulouse.fr)







Work-study  
contracts

## RÉSIDENCE NOBEL



**36, Place du 19 mars 1962 - 81000 Albi**

Situated 5 minutes from the campus

**35 1-room units - 19 m<sup>2</sup>** (equipped kitchen and individual bathroom)

**8 1-room units PRM-accessible**

SERVICES +



CONTACT 05 63 48 16 92

[contact.albi@crous-toulouse.fr](mailto:contact.albi@crous-toulouse.fr)



Albi

## RÉSIDENCE HABITAT JEUNES



### EN ALBIGEOIS (URHAJ)

**50 rue Croix Verte - 81000 Albi**

**116 furnished accommodations**, bedroom to 3-room units

**Available to work-study contract students**

SERVICES +



CONTACT 05 63 54 16 47

[contact@habitat-jeunes-albi.fr](mailto:contact@habitat-jeunes-albi.fr)

[www.habitat-jeunes-albi.fr](http://www.habitat-jeunes-albi.fr)



Albi



Work-study  
contracts





Work-study  
contracts

## RÉSIDENCE HABITAT JEUNES



### LE LOIRAT (URHAJ)

Rue du Loirat - 81000 Albi

**35 furnished accommodations:** 20 1-room units and 15 2-room units  
(equipped kitchen and individual bathroom)

SERVICES +



CONTACT 05 63 54 16 47

[contact@habitat-jeunes-albi.fr](mailto:contact@habitat-jeunes-albi.fr)

[www.habitat-jeunes-albi.fr](http://www.habitat-jeunes-albi.fr)



## OTHER ACCOMMODATION OFFERS

### INSTITUT NATIONAL UNIVERSITAIRE CHAMPOLLION

Information at the one-stop service (Guichet Unique)

**Place de Verdun - 81000 Albi** / ground floor administration building

CONTACT 05 63 48 91 43 – 05 63 48 64 19

[guichet.unique-albi@listes.univ-jfc.fr](mailto:guichet.unique-albi@listes.univ-jfc.fr)

Hours: Monday to Thursday: 8.30 am - 5.30 pm non-stop

Friday: 8.30 am - 5 pm non-stop

### L'ÉCOLE DES MINES D'ALBI

Has its own residences reserved for its students:

**Allée des sciences - 81000 Albi**

CONTACT 05 63 49 30 00

### CLASSIFIED ADS AT THE TARN YOUTH INFORMATION CENTRE

**11, rue Fonvieille - 81000 Albi**

CONTACT 05 63 56 22 54

[ijtarn@crij.org](mailto:ijtarn@crij.org)





Work-study  
contracts

### **SOME PRIVATE ADS ON THE CROUS WEBSITE**

[www.lokaviz.fr](http://www.lokaviz.fr)



### **THE AGENCY ALBI GESTION IMMOBILIÈRE**

Proposes reductions for students

### **TARN HABITAT SOCIAL HOUSING ADMINISTRATION**

Proposes offers for students

[www.tarnhabitat.fr/nos-offres-etudiants](http://www.tarnhabitat.fr/nos-offres-etudiants)

### **SHARING THROUGH THE SOLIDARITY PROJECT KAP'S**



For the 2017/2018 academic year, the AFEV Tarn, Students Foundation Association for the Town, offers places in the Kaps, "kolocations à projets solidaires" in Albi.

### **Shared accommodations in 5-room units in the Lapanouse district**

Rent €140 - €180 including charges (before deductions for housing benefit), for 7 students (only)

The residence is situated 5 minutes from the city centre and 15 minutes from the Champollion campus

5 hours of commitment per week during the academic year (2 hours helping a child or young person and 3 hours for a solidarity project)

Being a kapseur is to put your energy and creativity at the service of an innovative project, compatible with studies close to home, and to participate in activities with locals and partners around a variety of themes (education, the environment, events, culture, sport).

Motivated? You can find more information on the koloc solidaire register and be contacted!

[jennifer.renaudin@afev.org](mailto:jennifer.renaudin@afev.org)





## RÉSIDENCE HABITAT JEUNES LE NOCTILE (URHAJ)



Work-study  
contracts

2 Ter rue du 8 mai - 32000 Auch



80 furnished accommodations: Bedrooms 16 m<sup>2</sup> - 1-room units 21 m<sup>2</sup> - large studios (for 2 occupants) – 2-room units (for 2 occupants)

### SERVICES +



CONTACT 05 62 64 02 32

[contact.noctile@alojeg.fr](mailto:contact.noctile@alojeg.fr)  
[www.lenoctile.fr](http://www.lenoctile.fr)



## LA MAISON DIOCÉSAINE

13 rue Dr Samalens 32000 Auch

21 student accommodations: 1-room units - 20m<sup>2</sup> - €297 – large studios - 24 m<sup>2</sup> - €320 – 2-room units - 52m<sup>2</sup> - €370. Furnished, equipped kitchenette.

### SERVICES +



CONTACT 05 62 61 91 52



## LA MAISON DU LOGEMENT

7, bis rue Gambetta - 32000 Auch

They guide you to the right service or contact person and assemble all the rental offers from individuals and agencies

CONTACT 05 62 05 52 80

[contact@maisonlogement.com](mailto:contact@maisonlogement.com)  
[www.maisonlogement.com](http://www.maisonlogement.com)







Work-study  
contracts  
(package  
4/5 nights  
half-board)

## SOCIAL HOUSING ORGANISATIONS

### LE TOIT FAMILIAL DE GASCOGNE

**68, rue Dessoles - 32000 Auch – Two student residences:**

**Darwin:** close to the lycée du Garros: **40 furnished accommodations (1-room units and large studios from 20-33 m²)** €220-€271, add between €55 and €69 for charges - Internet and parking

**Plein Sud Embaques:** close to the IUT

**30 furnished accommodations (1- and 2-room units), Parking** - €260-€340 (Add between €18 and €42 for charges)

**CONTACT** 05 62 61 69 90



### OFFICE PUBLIC DE L'HABITAT

**71 rue Jeanne d'Albret 32000 Auch – Social Housing from 1- to 4-room units** - close to the lycées and IUT. Possible sharing and parking.

**CONTACT** 05 62 60 14 50

[contact@oph32.fr](mailto:contact@oph32.fr)



### THE J'LOGE GERS PLATFORM

New housing platform for under-30s looking for accommodation in the Gers [www.jloge.fr](http://www.jloge.fr)

## RÉSIDENTIE HABITAT JEUNES LES CORDELIERS (URHAJ)



### RÉSIDENTIE JEAN-JAURÈS

**188 avenue Jean Jaurès - 46000 Cahors**

**38 accommodations: 1, 3- and 4-room units** rent €300 including charges

**SERVICES +**



**CONTACT** 05 65 35 64 71

[fjt46@wanadoo.fr](mailto:fjt46@wanadoo.fr)

[www.fjtcordeliers.jimbo.com](http://www.fjtcordeliers.jimbo.com)







Work-study  
contracts  
(package  
4/5 nights  
half-board)

### RÉSIDENCE LES CORDELIERS

222 rue Joachim Murat - 46000 Cahors

**25 bedrooms (singles and doubles) 20 m<sup>2</sup> - €298**  
(individual toilets and hand basins)

#### SERVICES +



#### CONTACT

05 65 35 64 71

[fjt46@wanadoo.fr](mailto:fjt46@wanadoo.fr)

[www.fjtcordeliersjimbo.com](http://www.fjtcordeliersjimbo.com)



### ASSOCIATION POUR L'HABITAT

### DE JEUNES EN QUERCY (URHAJ)



129 rue Fondue Haute - 46000 Cahors

**2 accommodations (20 just for students) furnished**  
**Single rooms 10-15 m<sup>2</sup> - €301.60** (bathrooms on same floor)  
**1-room units 15 m<sup>2</sup> - €379** (individual bathrooms)  
**Studios (outside the residence) 20-30 m<sup>2</sup> - €332 - €395**

#### SERVICES +



#### CONTACT

05 65 35 29 32

[afjq46@yahoo.fr](mailto:afjq46@yahoo.fr)



Lines 1, 2, 3  
and 4



Work-study  
contracts  
(package  
4/5 nights  
half-board)







Work-study  
contracts

## SOCIAL HOUSING LANDLORDS

### **POLYGONE**

25 boulevard Gambetta - 46000 Cahors

55 accommodations 16-28 m<sup>2</sup> (35 in the Henri Martin Residence, 12 in the Augustins residence, 8 in the Pierre Sémaré Residence)  
between €280 and €300 including charges (heating, household waste collection, council tax)

**CONTACT** 05 65 35 64 71

[fjt46@wanadoo.fr](mailto:fjt46@wanadoo.fr)

### **LOT HABITAT**

23 avenue A. Juin - 46000 Cahors

**CONTACT** 05 65 53 20 20

[ophlm46@lot-habitat.com](mailto:ophlm46@lot-habitat.com)/[www.lot-habitat.com](http://www.lot-habitat.com)

### **"QUALITE LOGEMENTS JEUNES" LABEL**

118 rue Wilson - 46000 Cahors

The Cahors Youth Information Office has set up a quality label to facilitate rental by private home owners to young people. All information and housing ads are available at the BIJ Cahors

**CONTACT** 05 65 23 95 90







Work-study  
contracts

## RÉSIDENCE LE SIDOBRE - CROUS



**Rue Firmin Oulès - 81100 Castres**

Close to IUT

**72 1-room units - 18 m<sup>2</sup>** (equipped kitchen and individual bathroom)

**SERVICES +**



**CONTACT** 05 63 35 2180

[contact.castres@crous-toulouse.fr](mailto:contact.castres@crous-toulouse.fr)

[www.crous-toulouse.fr/logements/residences](http://www.crous-toulouse.fr/logements/residences)



**Castres**

## LE SYNDICAT MIXTE

**Avenue Georges Pompidou - 81100 Castres**

Supports students in their search for accommodation by offering an online housing contact point. This lists the offers aimed at students, whether they come from individuals, agencies, or Social Housing.

**The offices are located on the premises of the IUT Paul Sabatier de Castres**

**CONTACT** 05 63 62 1164

[contact.syndicadmixe@iut-tlse3.fr](mailto:contact.syndicadmixe@iut-tlse3.fr)

You can consult the housing offers on the site

[www.etudier-castres-mazamet.com](http://www.etudier-castres-mazamet.com)



**Castres**





Sharing



Work-study  
contracts

## RÉSIDENCE LE CORPORAL - URHAJ



**7 et 9 rue Pasteur Hubac - 81100 Castres**

Close to CFA Anne Veaute

**2 residences: Les Pins, Les Lauriers**

**70 studios and 9 bedrooms**

**Studios 22 m<sup>2</sup> furnished**, equipped kitchenette and bathrooms - €355

**4 studios accessible to people with reduced mobility**

**SERVICES +**



+ community restaurant Monday to Friday

**CONTACT** 05 63 62 58 10

[accueil.fjt@foyerprotestant-castres.fr](mailto:accueil.fjt@foyerprotestant-castres.fr)

[www.habitat-jeunes-castres.fr](http://www.habitat-jeunes-castres.fr)



## SOCIAL HOUSING ORGANISATION

### L'OFFICE PUBLIC DE L'HABITAT DE CASTRES (OPH-CASTRES)

Publishes accommodation offers for students

**Résidence 2 place Jean Bouffard : 19 1-room units furnished, equipped kitchen, WiFi - €229 - €259**

**Résidence 24 rue de la Tolosane: 16 accommodations (1- and 2-room units) furnished - €173 - €258 (equipped kitchen, WiFi)**

**1 accommodation accessible to people with reduced mobility**

**Possible unfurnished accommodation available in the city centre or outside the city centre**

**CONTACT** 05 63 62 61 00

[www.oph-castres.fr/espace-demandeur](http://www.oph-castres.fr/espace-demandeur)  
[notre-offre-etudiants](http://www.oph-castres.fr/espace-demandeur)



Work-study  
contracts





Sharing



Work-study  
contracts

## RÉSIDENCE FRANÇOISE SAGAN - CROUS



**"La Pintre" - 46100 Figeac**

Close to IUT

22 bedrooms in shared accommodation in 7 fully equipped flats:

**3-room duplex units 65 m<sup>2</sup> – 4-room units 77 m<sup>2</sup> – 5-room units 90 m<sup>2</sup>**

**SERVICES +**



**CONTACT**

05 65 50 06 80

[contact.figeac@crous-toulouse.fr](mailto:contact.figeac@crous-toulouse.fr)

[www.crous-toulouse.fr/logements/residences](http://www.crous-toulouse.fr/logements/residences)



Work-study  
contracts

## RÉSIDENCE LES SOLEILHOS (URHAJ)



**8 av Bernard Fontanges 46100 Figeac**

**51 accommodations (1-room units, large studios, 2-room units) furnished** and equipped with a kitchenette, bathroom and separate WC

**CONTACT**

05 65 38 62 75

[rhj.soleilhoss@anras.fr](mailto:rhj.soleilhoss@anras.fr)







Work-study  
contracts

## SOCIAL HOUSING ORGANISATION

### LOT HABITAT - FIGEAC AGENCY

Résidence Montviguier n°104 bât B 46100 Figeac

**135 studios close to the IUT - 27 m<sup>2</sup>** with kitchenette (equipped with hot plates, fridge and cupboards), sleep corner, shower room, electric heating. Monthly rent approx. €220

**CONTACT** Bruno Luzzi 05 65 34 26 71  
[b.luzzi@lot-habitat.com](mailto:b.luzzi@lot-habitat.com)



## SERVICE HABITAT C.I.A.S

8, place Vival - 46100 Figeac

The C.I.A.S Habitat service of greater Figeac links landlords and tenants, free of charge, for temporary housing rentals.

A charter commits the landlord to quality rules and the tenant to a code of good behaviour and links the two parties for the duration of the lease.

**CONTACT** 05 65 50 05 01  
[servicehabitat.cias@grand-figeac.fr](mailto:servicehabitat.cias@grand-figeac.fr)



Work-study  
contracts





Sharing



Work-study  
contracts

## RÉSIDENCE DU CENTRE UNIVERSITAIRE

### ROBERT NAUDI

**4 Rue Raoul Lafayette - 09000 Foix**

On the Foix University campus

A university hall on the campus comprising:

**27 studios, 12 bedrooms, 2 common rooms, a cafeteria,  
private parking** - €225 - €350 charges included, **5 large studios**  
accessible to people with reduced mobility.

Applications are made directly with the university.

Accommodation for trainees may be available between April and August.

**CONTACT** 05 61 02 19 80



## LE BIJ/PIJ

**Espace Olivier Carol**

Publishes accommodation offers and flat-sharing offers

**CONTACT** 05 61 02 86 10

[www.bij09.org](http://www.bij09.org)



Sharing



Work-study  
contracts







Work-study  
contracts

## RÉSIDENCE ÉTUDIANTE DU LÉO

**16 rue Noel Peyrevidal - 09000 Foix**

At the heart of the city centre, only a few minutes from the campus, the Léo de Foix welcomes students in a new residence:  
7 bedrooms, 3 studios, a communal kitchen, a common room, and all the Léo activities close by.

**CONTACT** 05 61 65 09 04

[contact@leodefoix.com](mailto:contact@leodefoix.com)

[www.leodefoix.com](http://www.leodefoix.com)



## RÉSIDENCE PIERRE DOUZOU - CROUS



**1, rue du Jumel - 12100 Millau**

**24 1-room units - 18-22 m<sup>2</sup>** (equipped kitchen and individual bathroom)

**2 1-room units PRM-accessible**

**SERVICES +**



**CONTACT** 05 63 48 16 92

[hebergement.rangueil@crous-toulouse.fr](mailto:hebergement.rangueil@crous-toulouse.fr)

[www.crous-toulouse.fr/logements/residences](http://www.crous-toulouse.fr/logements/residences)







Work-study  
contracts  
(in 4-bed  
bedrooms)

## RÉSIDENCE HABITAT JEUNES DU FORT (URHAJ)

5 rue du Fort - 82000 Montauban

71 accommodations for long or short stay, including 4 external flats  
(2- and 3-room units) for sharing

SERVICES +



Montauban

**CONTACT** 05 63 21 26 00 – [accueil@residence-du-fort.com](mailto:accueil@residence-du-fort.com)  
[www.residence-du-fort.com](http://www.residence-du-fort.com)

## STUDENT SUPPORT – CENTRE UNIVERSITAIRE DU TARN ET GARONNE



Work-study  
contracts

116 boulevard Montauriol - 82000 Montauban  
Consult ads posted by private individuals



Montauban

**CONTACT** Christine Gamel 05 63 91 88 77 / 06 71 83 01 60  
[aidealetudiant@ledepartement82.fr](mailto:aidealetudiant@ledepartement82.fr)





Work-study  
contracts

## RÉSIDENCE URHAJ CŒUR DE VILLE



**21 rue Bonald - 12000 Rodez**

Located 10 minutes on foot from the IUT. In the heart of Rodez city centre, the residence proposes furnished accommodation for short or long stays, 12-20 m<sup>2</sup> including 3 bedrooms for sharing, each with 2 beds.

**SERVICES +**



**CONTACT**

05 65 77 14 00 [fjt-rodez.wifeo.com](http://fjt-rodez.wifeo.com)





Work-study  
contracts  
(in 4-bed  
bedrooms)

## C.L.A.J. CLASSIFIED ADS

### **4 rue du Maréchal Leclerc de Hautecloque (level -1) 12000 Rodez.**

Information and guidance about accommodation for young people. The C.L.A.J. publishes accommodation offers from private individuals who have been visited by the association. The C.L.A.J informs you about your accommodation budget, the steps you must take, your rights and responsibilities and housing benefits, and it will even help you get them!

Offers on line at [www.clajrodez.org](http://www.clajrodez.org). **Facebook: Claj Grand Rodez**

**CONTACT** 05 65 73 16 32



## SOCIAL HOUSING RODEZ AGGLO HABITAT

### **14, rue de l'Embergue CS 33217 12032 Rodez cedex 9**

65 furnished accommodations of 20-50 m<sup>2</sup> with attractive rents. Management and reservations by Rodez Agglo Habitat. In agreement with the Crous, the furnished accommodations (1-room units of 19-22 m<sup>2</sup>) are reserved for students who are eligible for a grant. They are located close to the IUT, 6 rue du Maréchal Leclerc. They can also be found on the Crous website (Rodez section).

**SERVICES +**



**CONTACT** 05 65 77 14 40

[www.rodezagglo-habitat.fr](http://www.rodezagglo-habitat.fr)







Work-study  
contracts

## RÉSIDENCE LES CAPUCINES (URHAJ)



**26 boulevard des Capucines 12850 Onet-Le-Château**

Close to all local services, the residence offers 11 bedrooms which can house up to 3 people for weekly stays as well as furnished studios and 1-room units with kitchenette for monthly stays.

SERVICES +



CONTACT 05 65 77 51 05

capucines@hjgr.fr – [www.residence-les-capucines.fr](http://www.residence-les-capucines.fr)



## FOYER ÉTUDIANTS DE LA MAISON SAINT PIERRE

**Av de Saint Pierre, Bourran – 12000 Rodez**

55 bedrooms with private bathrooms approx 18 m<sup>2</sup> for short or long stays, including 4 bedrooms for sharing with 2 beds. We accept full-time students, work-study contract students and trainees. No council tax or charges.

SERVICES +



CONTACT 05 65 68 04 47

foyeretudiants@gmail.com – [foyeretudiantsrodez.fr](http://foyeretudiantsrodez.fr)







Work-study  
contracts

## RÉSIDENCE UNIVERSITAIRE ESPE

**12 rue Sarrus – 12000 Rodez**

30 furnished bedrooms for rent per night or per month.

Single room 14 m<sup>2</sup> (individual shower rooms and WCs) - €270/month - €22/night

Double room 23 m<sup>2</sup> (individual shower rooms and WCs) - €320/month €40/night

SERVICES +



CONTACT

05 65 68 03 43 – [espe.savu\\_rodez@univ-tlse2.fr](mailto:espe.savu_rodez@univ-tlse2.fr)

[http://spe.univ-toulouse.fr/accueil/-/l-espe/sites-de-formation/rodez/res-  
tauration-et-hebergement](http://spe.univ-toulouse.fr/accueil/-/l-espe/sites-de-formation/rodez/res-<br/>tauration-et-hebergement)



Rodez

## RÉSIDENCE SIMONE VEIL - CROUS

Crous

**39, rue Vincent Scotto - 65000 Tarbes**

Situated in the heart of the university campus. **64 studettes - 9 m<sup>2</sup>** (equipped kitchen and individual bathroom). **372 studios - 14 m<sup>2</sup>** (equipped kitchen and individual bathroom). One 1-room unit PRM-accessible

SERVICES +



CONTACT

05 62 44 65 65 – [contact.tarbes@crous-toulouse.fr](mailto:contact.tarbes@crous-toulouse.fr)

[www.crous-toulouse.fr/logements/residences](http://www.crous-toulouse.fr/logements/residences)



Tarbes





Ligne 1



Work-study  
contracts



## RÉSIDENCE ATRIUM FJT - URHAJ



88, rue Alsace Lorraine - 65000 Tarbes

**90 furnished bedrooms**

**Flat rate single room 12 m<sup>2</sup> (communal shower and WC) - €389.40**

(rent €280.80 + breakfast €33 + 12 meals €75.60)

**Flat rate 1-room unit 14 m<sup>2</sup> (individual shower and WC) - €467.70**

(rent €359.10 + breakfast €33 + 12 meals €75.60)

**Flat rate premium 1-room unit 30 m<sup>2</sup> (individual shower and WC + living room) -**

€586.20 (rent €477.60 + breakfast €33 + 12 meals €75.60)

**Flat rate: 4 nights + 4 breakfasts + 4 meals - €96 + €20 administration fee**

**Flat rate: 5 nights + 5 breakfasts + 4 meals if you arrive on a Sunday**

**evening - €106 + €20 administration fee**

**Nightly price: 1 night + 1 breakfast + sheets - €20**

**1 disabled-access bedroom available**

**SERVICES +**



**CONTACT** 0562 38 9120

[accueil@fjt-tarbes.fr](mailto:accueil@fjt-tarbes.fr)

[www.fjt-tarbes.fr](http://www.fjt-tarbes.fr)







Work-study  
contracts

## SOCIAL HOUSING ORGANISATIONS

### **OPH 65 (OFFICE PUBLIC DE L'HABITAT DES HAUTES-PYRÉNÉES)**

**28, rue des Haras - 65000 Tarbes**

OPH 65 supports students in their search for accommodation

**Accommodation in 1- to 4-room units (sharing), equipped, in the Solazur district (close to the university establishments and restaurants) -**

from €280 - €531

For a 2-year rental, students can benefit from the offer of 3 months free!



**CONTACT** 05 62 96 81 17 / 05 62 37 23 14

<http://www.oph65.fr/1-31807-Espace-etudiants.php>

### **LA SEMI (SOCIÉTÉ D'ÉCONOMIE MIXTE DE CONSTRUCTION DE LA VILLE DE TARBES)**

**29, rue Georges Clémenceau - 65000 Tarbes**

Accommodation in the university centre: "résidence Bastillac" and "résidence Carline"

**CONTACT** 05 62 51 42 15

[Christelle.saint-martin@semi-tarbes.fr](mailto:Christelle.saint-martin@semi-tarbes.fr)  
[www.semi-tarbes.fr](http://www.semi-tarbes.fr)







Work-study  
contracts

## CLASSIFIED ADS

### BIJ DE TARBES

3, rue Colomès de Juillan - 65000 Tarbes

**CONTACT** 05 62 93 22 12



See page 82, where you will find the national websites for private offers of accommodation, flat-sharing or temporary accommodation.



## Solutions for work-study students / apprentices:

(for procedures and aid, see Chapter 1 of the guide)

Contact the organisation Action Logement to support you in your search for accommodation during your work-study contract:

<https://alternant.actionlogement.fr>

The URHAJ (Habitat Jeunes network) proposes accommodation solutions for work-study students:

[habitatjeunesoccitanie.org](http://habitatjeunesoccitanie.org)

Consult the accommodation map for apprentices in Occitanie on the region's website:

[www.laregion.fr/cartographie-interactive/carte\\_hebergement\\_apprentis](http://www.laregion.fr/cartographie-interactive/carte_hebergement_apprentis)

## Furnishing

Furnishing on the cheap, think recycling! In the spring and autumn, all the towns organise vide-greniers (car boot sales).

Visit the region's Emmaüs shops on the website [emmaus-france.org/](http://emmaus-france.org/) ou-  
[donner-ou-acheter](#)

## The Internet address book for student accommodation

### CONSULT PRIVATE OFFERS:

Many private individuals offer accommodation for students, particularly furnished accommodation.

From the month of May, many students begin to leave their accommodation. It is from this time until the end of July that there are the most adverts for bedrooms, studios, 1-room units, large studios or large flats for sharing.

The price of the rent depends on the size of the accommodation and its location,

but don't forget that students have the right to housing benefits.

Offers at [www.pap.fr](http://www.pap.fr)

Offers at [www.leboncoin.fr](http://www.leboncoin.fr):

**Be wary of offers which are "too good to be true!" You can spot these offers by the professional photographs + a low rent + and the absence of a contact telephone number. It can happen that you are asked to make a deposit to reserve the accommodation. Be careful you don't fall into this trap!**



## CONSULT FLAT-SHARING OFFERS

The site created by young people in Toulouse to help you find someone to share with by establishment and interests and also to find accommodation:

[www.bubbleflat.com](http://www.bubbleflat.com)

Consult the flat-sharing offers by registering for free on:

[www.lacartedescolocs.fr](http://www.lacartedescolocs.fr)

Find someone to share with or shared accommodation with the help of a free basic account that lets you contact only some people, or a fee-paying premium account to contact everyone and to be contacted:

[www.appartager.com](http://www.appartager.com)

Free sharing offers on [www.crij.org](http://www.crij.org) and [www.lokaviz.fr](http://www.lokaviz.fr)

**Don't forget social networks!**

## IN ADDITION, SOME IDEAS FOR TEMPORARY ACCOMMODATION...

[www.fuaj.org](http://www.fuaj.org)

[www.auberge-de-jeunesse.com](http://www.auberge-de-jeunesse.com)

[www.airbnb.fr](http://www.airbnb.fr)

[www.couchsurfing.com](http://www.couchsurfing.com)

Information on accommodation:

[www.service-public.fr](http://www.service-public.fr)

[www.logement.gouv.fr/monchezmoi](http://www.logement.gouv.fr/monchezmoi)

## NEED SOME ADVICE? SUPPORT? HELP?

Find out if there is a branch of BIJ/PIJ, ADIL or the CLAJ in your town or ask at the city hall or talk to someone in your establishment.

**Find us on our website  
dedicated to students:  
[welcomedesk.univ-toulouse.fr](http://welcomedesk.univ-toulouse.fr)!**





Université  
Fédérale

Toulouse  
Midi-Pyrénées

UNIVERSITÉ FÉDÉRALE  
TOULOUSE MIDI-PYRÉNÉES

41 Allées Jules Guesde  
31013 Toulouse

[www.univ-toulouse.fr](http://www.univ-toulouse.fr)



@Univ\_Toulouse