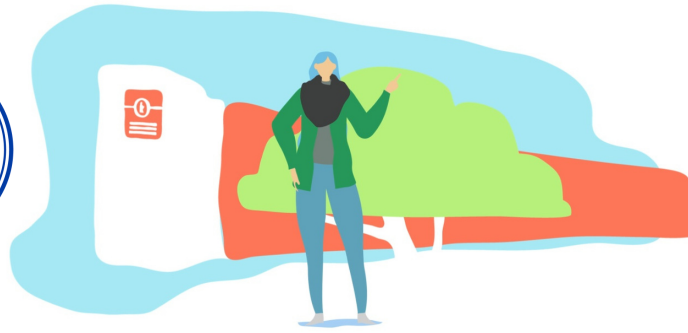


WHO'S WHO

TOULOUSE 1 CAPITOLE UNIVERSITY



YOUR CONTACT AT THE CENTRAL INTERNATIONAL OFFICE



Lucie JANDO - SCREI
welcome-ut1@ut-capitole.fr
+33 (0)5 61 63 35 45
Office: J104.5 (J building)

BEFORE MOBILITY

- General information (calendar, welcome days...)
- Accommodation (request form)

ON ARRIVAL

- Administrative registration
- Student card
- Signature of Erasmus+ arrival form
- Administrative registration for French courses

AFTER MOBILITY

- Send your transcript of records
- Signature of Erasmus+ departure form

YOUR ACADEMIC ADVISOR (PROFESSOR)



Your academic advisor will :

- advise you on the courses selection
- sign your learning agreement
- approve the potential modifications in your learning agreement
- help you with the course & exam requisites

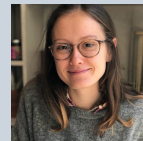
YOUR CONTACT PER FIELD OF STUDY



Each contact will guide you through advisor assignment and courses & exams registration



LAW, POLITICAL SCIENCE, COMMUNICATION,
INFORMATION TECHNOLOGY



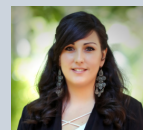
Lucie JANDO - SCREI
welcome-ut1@ut-capitole.fr
+33 (0)5 61 63 35 45
Office: J104.5 (J building)

ECONOMICS



Geneviève DOUMENG - TSE
genevieve.doumengeut-capitole.fr
+33 (0)5 61 63 37 63
Office: T031 (TSE building)

MANAGEMENT

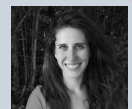


Debora MALIGNO - TSM
debora.maligno@tsm-education.fr
+33 (0)5 61 63 57 85
Office: AF0003 (TSM building)

DOUBLE-DEGREES & SPECIFIC PROGRAMMES
LAW



Arnaud CHAN - ESL
esl@ut-capitole.fr
+33 (0)5 61 63 38 48
Office : AR334 (Arsenal building)



Anna THEPIN - ESL
esl@ut-capitole.fr
+33 (0)5 61 63 38 84
Office : AR332 (Arsenal building)